

RFA MOST WANTED: HAVE YOU SEEN THEM?



SPECIAL REPORT:

The infamous Clog Monster is on the rise—clogging toilets and causing costly damage to homes and municipal wastewater systems. The U.S.' Environmental Protection Agency estimates up to 75,000 sewer overflow incidents occur every year, dumping 850 billion gallons of raw sewage. The Responsible Flushing Alliance (RFA) is working to bring down these culprits that, when flushed down the toilet, can wreak untold havoc on plumbing.



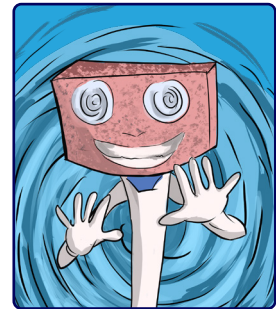
THE CLOG MONSTER

He's the mastermind behind sewage backups. Studies show that 98% of materials that clog wastewater treatment plants are non-flushable items. The Clog Monster lives in our sewars feeding off of these. Let's put an end to his reign!



GENERAL CLEANING WIPE

This disgraced general joined the Clog Monster in the pursuit of clogging toilets and sewers across the country. Wipes don't break down like toilet paper. Let's bring the general down and send cleaning wipes where they belong—in the trash.



TOILET CLEANING TRICKSTER

This villain masquerades in different forms -- as toilet wipes or disposable sponges on the end of cleaning wands. If you see the "Do Not Flush" symbol, they are not safe for flushing. Defy the Trickster's hypnotic powers, and put those cleaning materials in the trash.



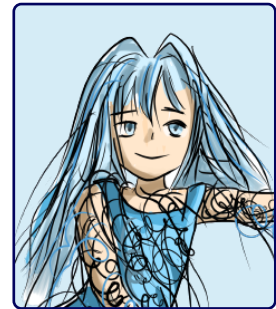
DUSTING WIPE DELINQUENT

This impressionable youth is reported to be General Cleaning Wipes No. 2 in training—being groomed to take over the posse and carry on their ring of toilet terror. Sewer backups can be a threat to public health. So let's all help to keep our waterways clear of wipes.



MEDICAL MOBSTER

The Medical Mobster lives in the dark, seedy caverns of your plumbing and sewer systems, feeding off of old medicine and medical supplies. Follow official guidelines when disposing of unused medicines and other medical waste.



DENTAL FLOSSER

Capitalizing on the public's heightened awareness of gum health, the Dental Flosser is a top offender in causing clogs and backups. When flushed down the toilet, floss gets tangled up with other debris and creates things called fatbergs — large, cement-like masses that cause blockages.



Remember that when sighted,
don't flush these items, or you'll end
up with your own Clog Monster.

