

USING CLIMATE CHANGE ANALYSIS TO GUIDE ADAPTATION STRATEGIES

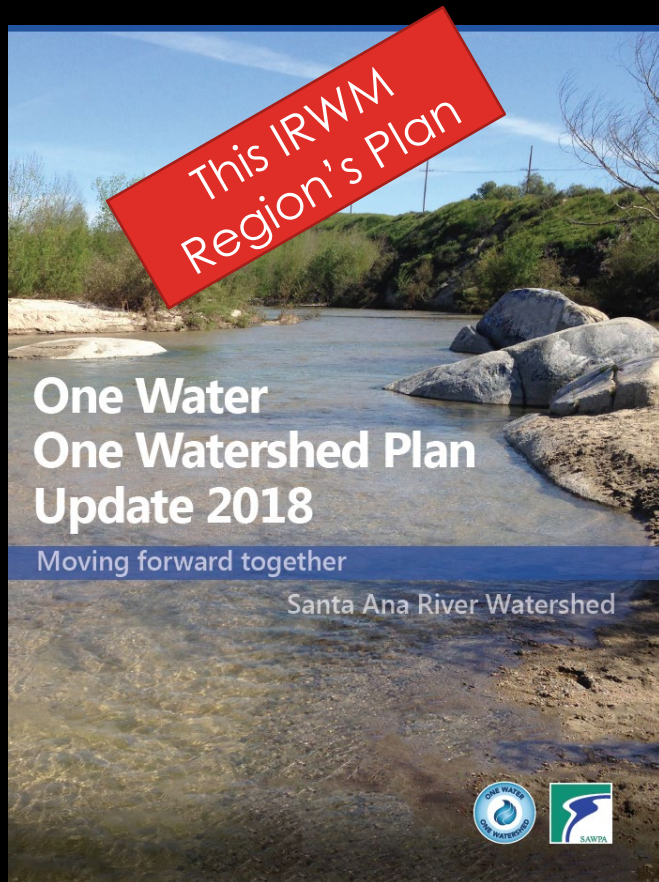


SANTA ANA RIVER WATERSHED SUSTAINABILITY ASSESSMENT

Ian Achimore
Senior Watershed Manager
Santa Ana Watershed Project Authority
iachimore@sawpa.org, (951) 354-4233



OWOW PLAN UPDATE 2018



The six goals of the OWOW Plan Update 2018 are to:

- Achieve resilient water resources through innovation and optimization.
- Ensure high-quality water for all people and the environment.
- Preserve and enhance recreational areas, open space, habitat, and natural hydrologic function.
- Engage with members of disadvantaged communities to diminish environmental injustices.
- Educate and build trust between people and organizations.
- Improve data integration, tracking, and reporting to strengthen decision making.

ASSESSMENT INDICATORS

Rating System



Negative



Neutral



Positive



No Data

In the interest of time, I highlight the five circled:

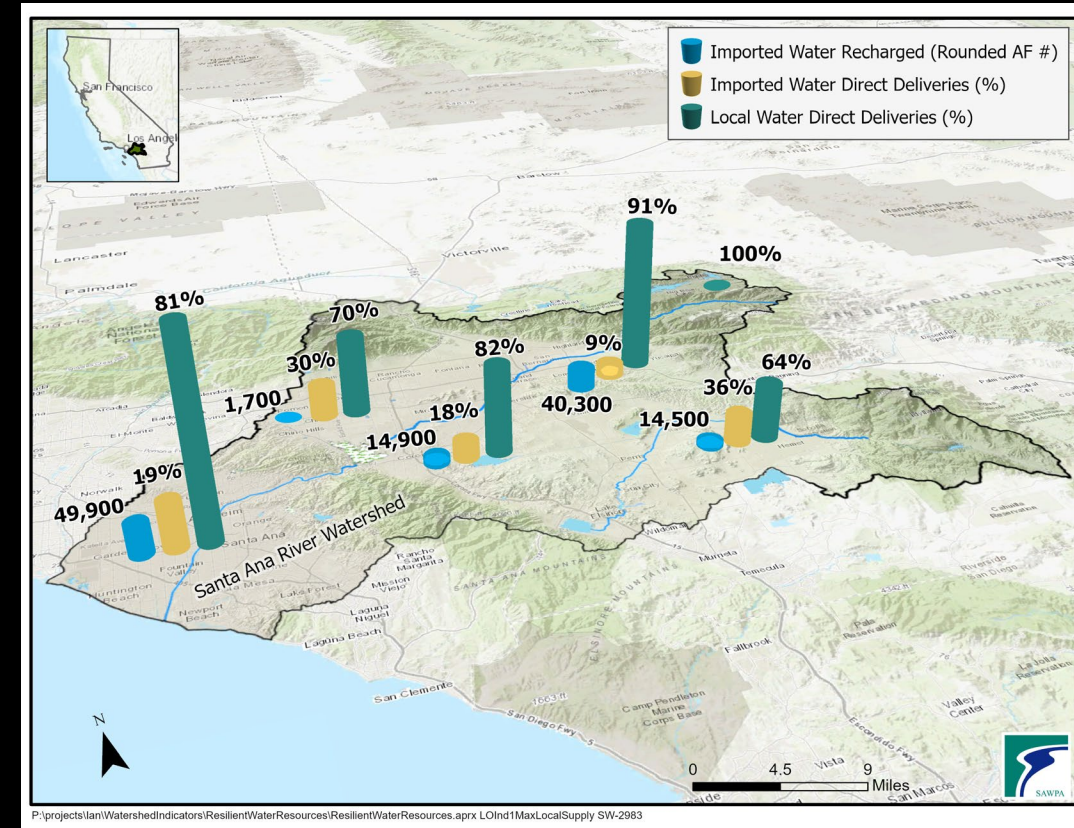
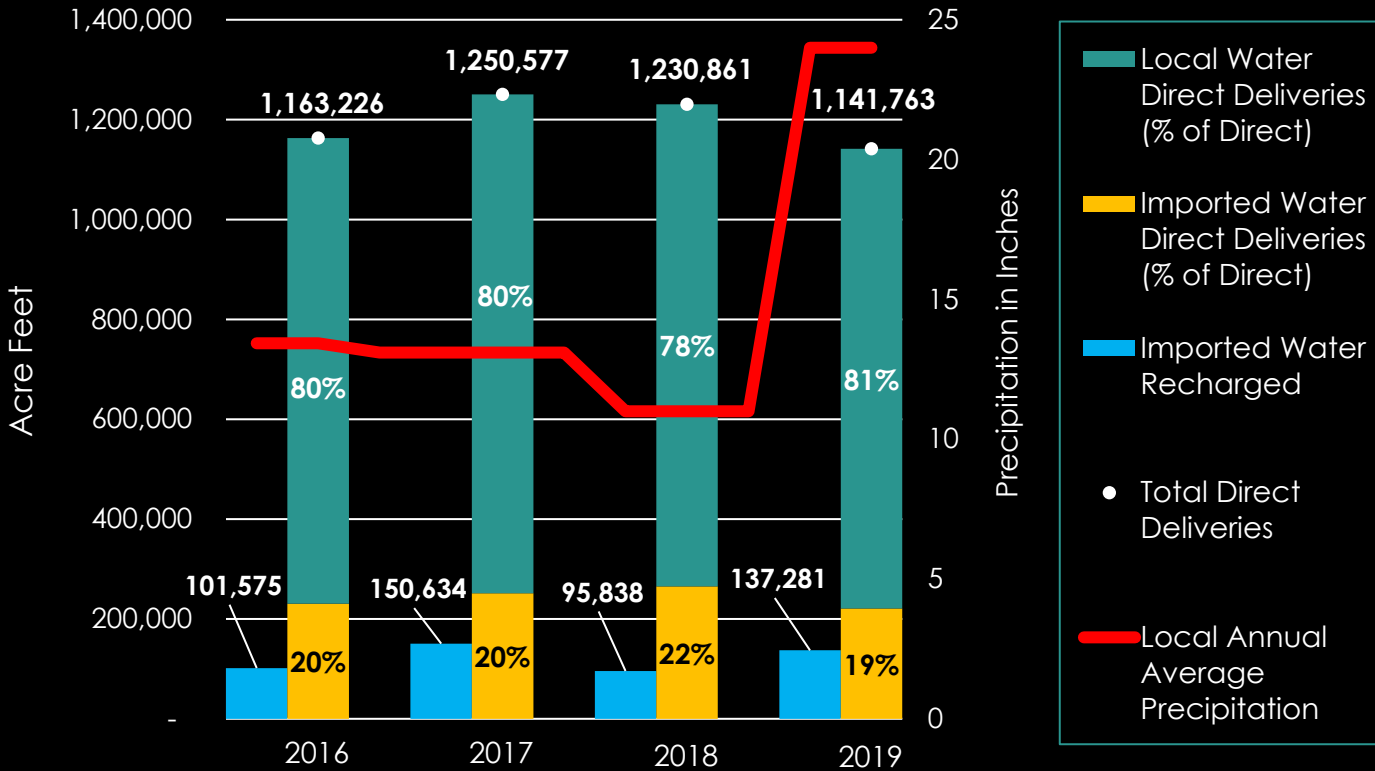


OWOW Goal	Indicator No.	Indicator Definition	Rating from 2018 Assessment	Rating from 2019 Assessment
Achieve resilient water resources through innovation & optimization	1	Maximization of locally-managed supplies	😊	😊
	2	Efficiency of outdoor water use	😊	😊
Ensure high quality water for all people & the environment	3	Maintenance of groundwater salinity at target levels	😊	😊
	4	Safety of water for contact recreation	😊	😊
Preserve & enhance recreational areas, open space, habitat	5	Abundance of riparian vegetation	😊	😊
	6	Abundance of conserved open space	😊	😊
Engage with members of disadvantaged communities	7	Equitable access to clean drinking water	😊	?
	8	Equitable implementation of climate change adaptation	😊	?
Educate & build trust between people & organizations	9	Collaboration for more effective outcomes	😊	😊
	10	Adoption of a watershed ethic	😊	😊
Improve data integration, tracking & reporting to strengthen decision-making	11	Broaden access to data for decision-making	😊	😊
	12	Participation in a regional database.	😊	😊



EXAMPLE GOAL: ACHIEVE RESILIENT
WATER RESOURCES THROUGH
INNOVATION AND OPTIMIZATION.

MAXIMIZATION OF LOCALLY-MANAGED SUPPLIES INDICATOR

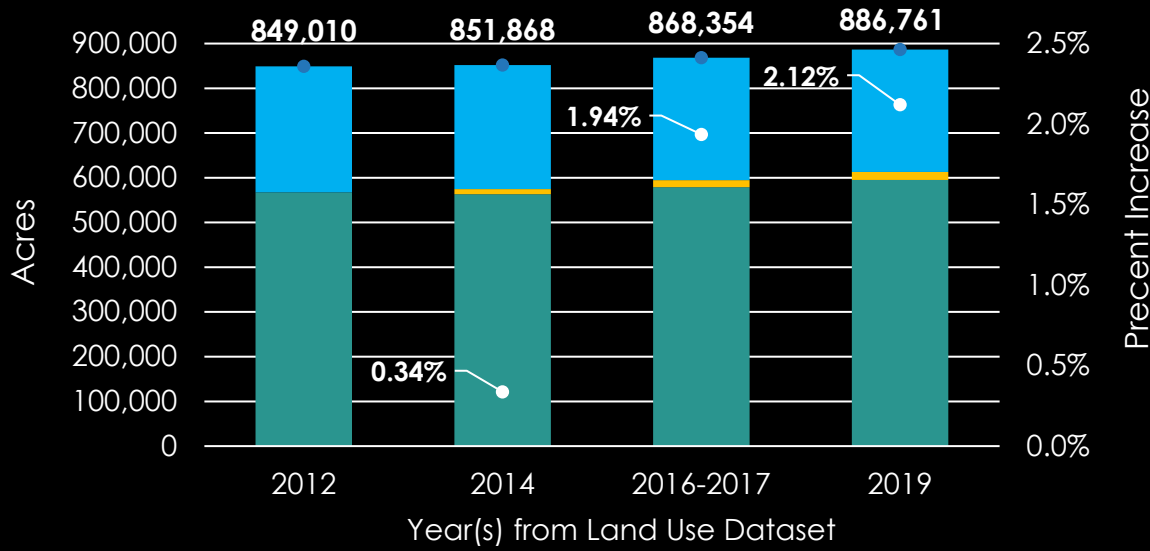


2019: Positive
(2018: Neutral)

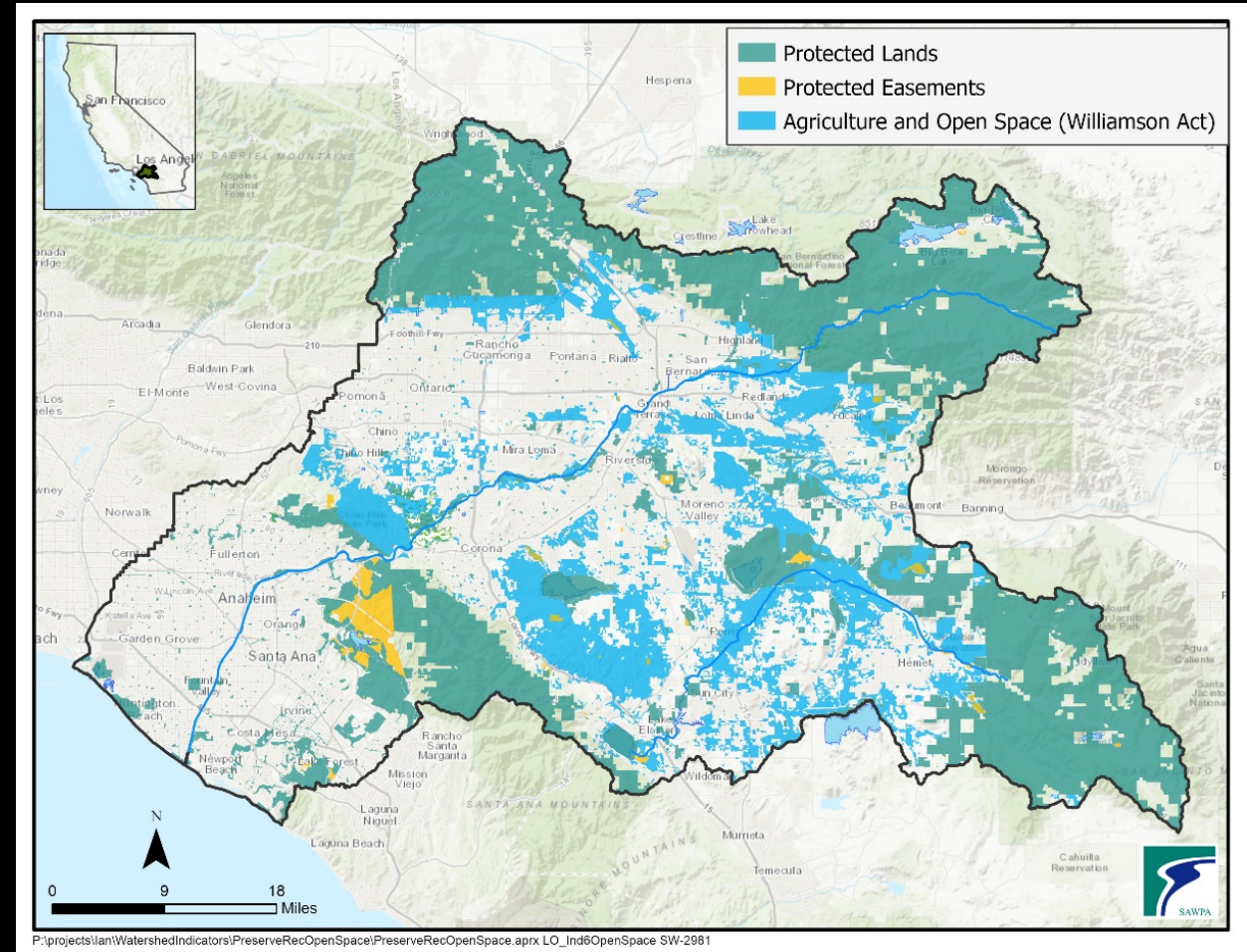


GOAL: PRESERVE AND ENHANCE
RECREATIONAL AREAS, OPEN SPACE,
HABITAT, AND NATURAL HYDROLOGIC
FUNCTION.

ABUNDANCE OF CONSERVED OPEN SPACE INDICATOR



- Agriculture and Open Space (Williamson Act)
- Protected Easements
- Protected Lands
- Total Protected Lands
- Percent Increase From Previous Years (All Lands)



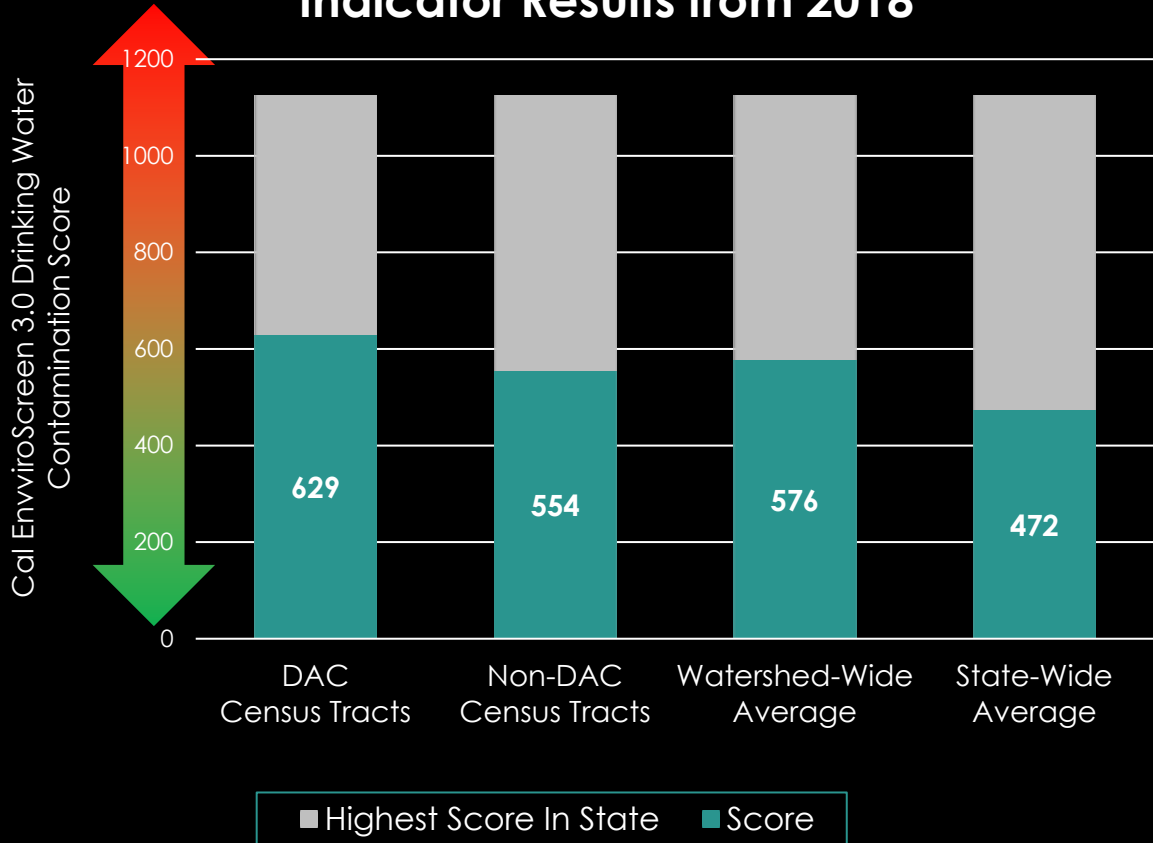
2019: Positive
(2018: Positive)



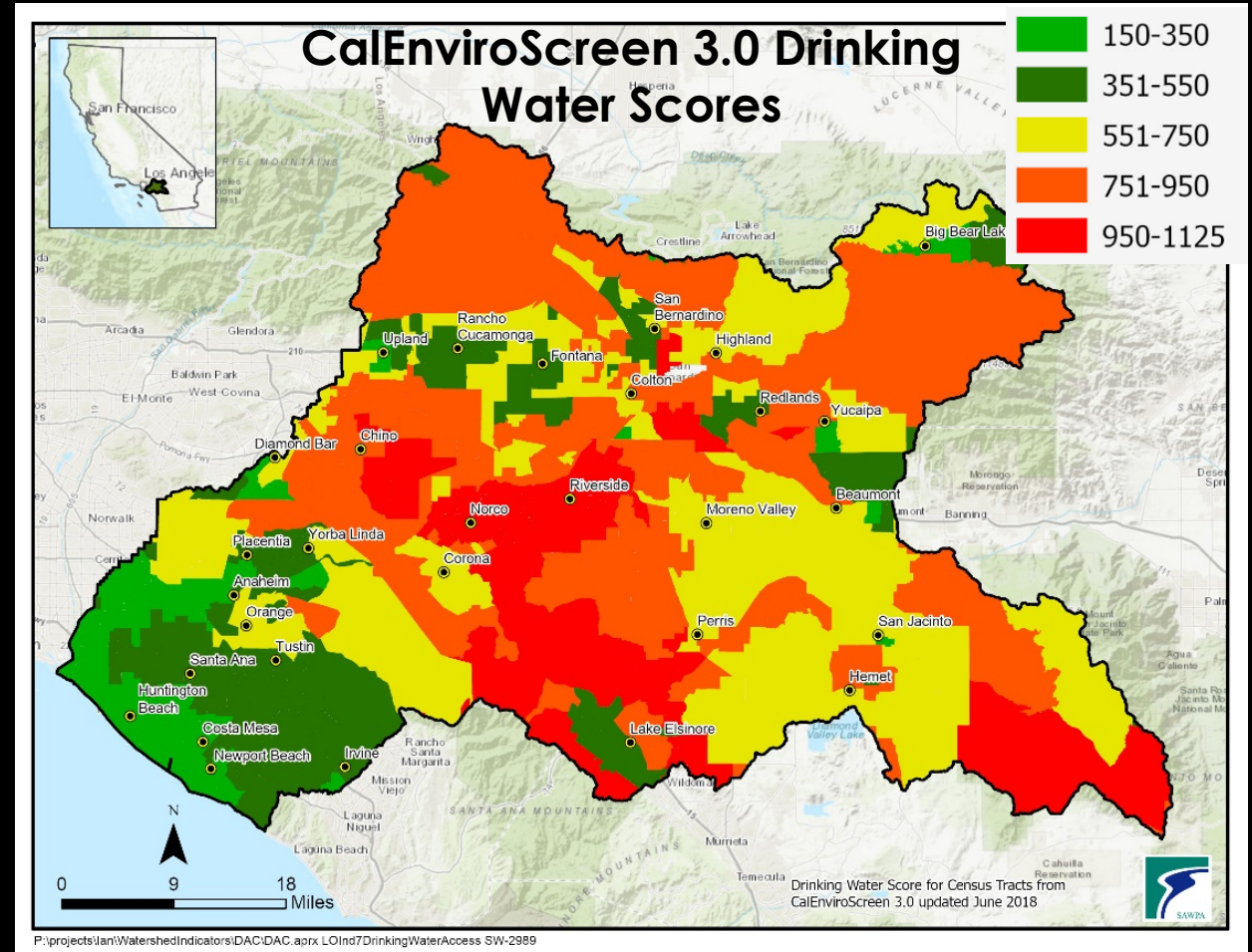
GOAL: ENGAGE WITH MEMBERS OF DISADVANTAGED COMMUNITIES AND ASSOCIATED SUPPORTING ORGANIZATIONS TO DIMINISH ENVIRONMENTAL INJUSTICES AND THEIR IMPACTS ON THE WATERSHED.

EQUITABLE ACCESS TO CLEAN DRINKING WATER INDICATOR

Indicator Results from 2018

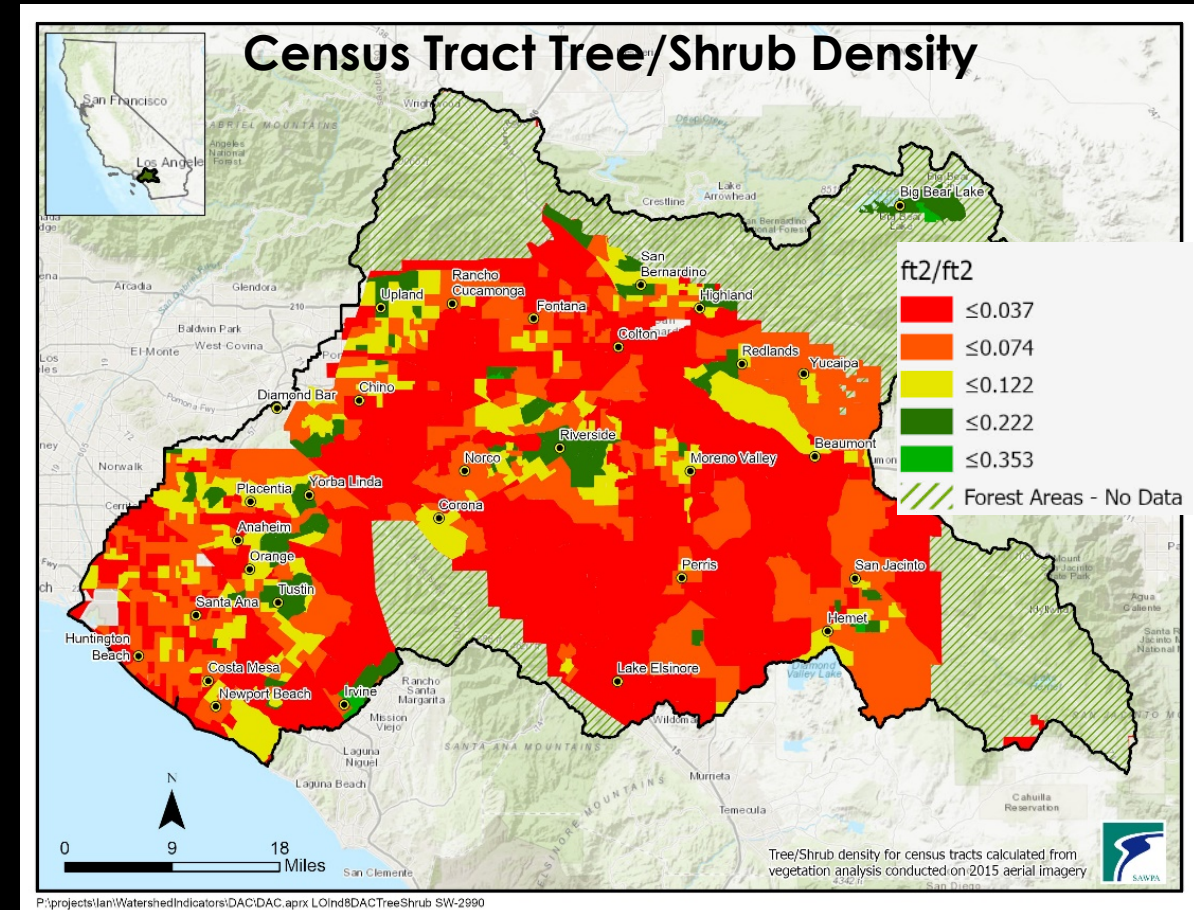
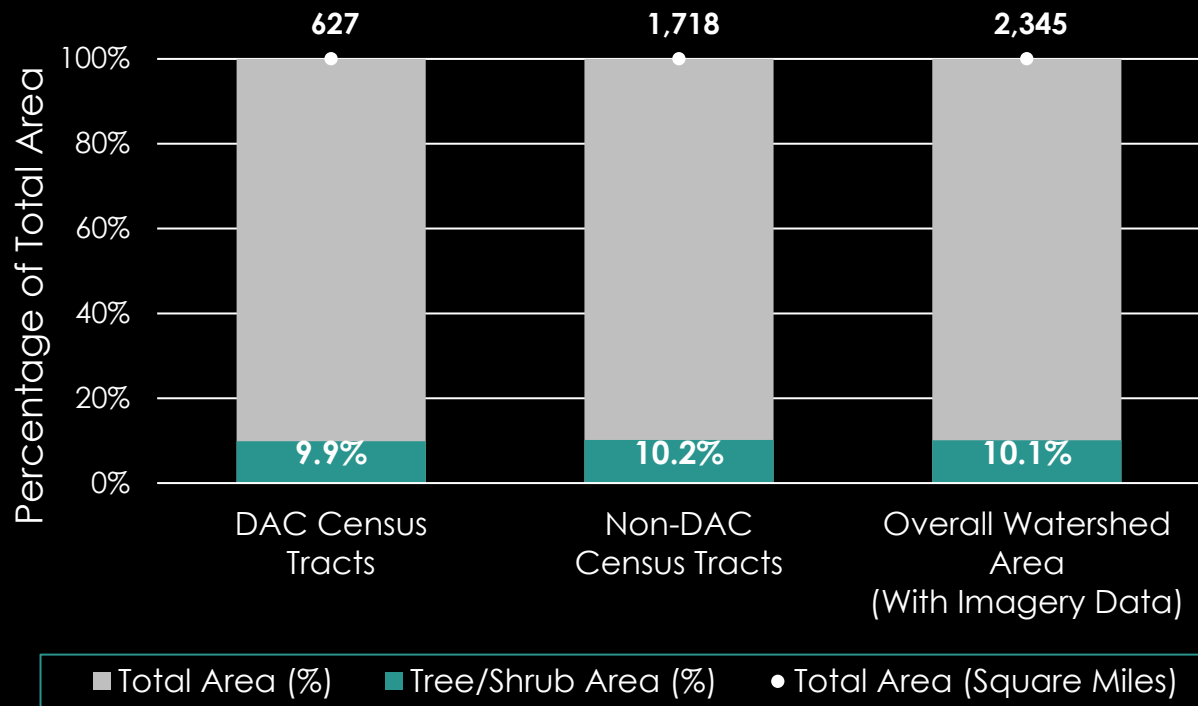


2019: No Current Data
(2018: Neutral)



EQUITABLE IMPLEMENTATION OF CLIMATE CHANGE ADAPTATION INDICATOR

Indicator Results from 2018

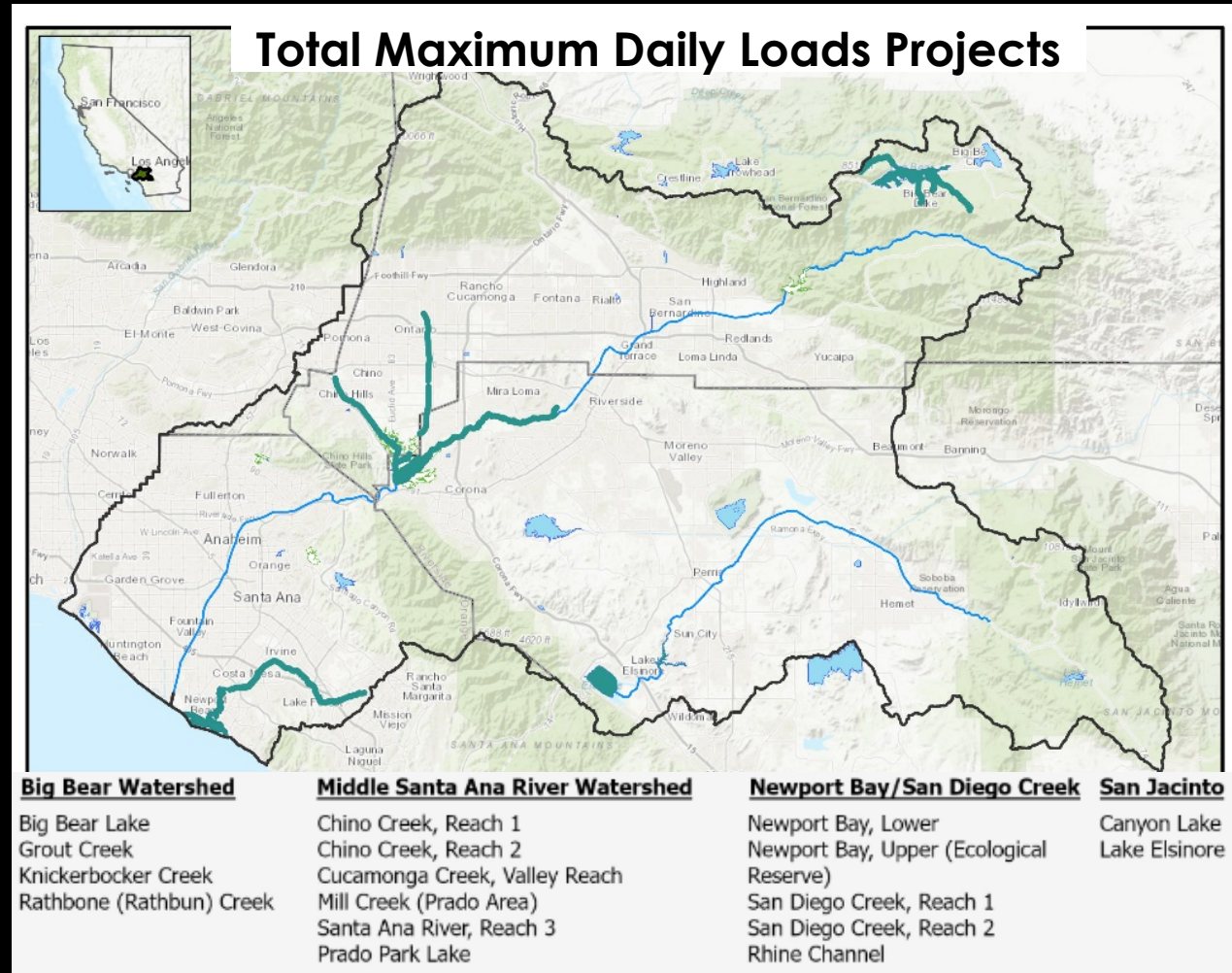
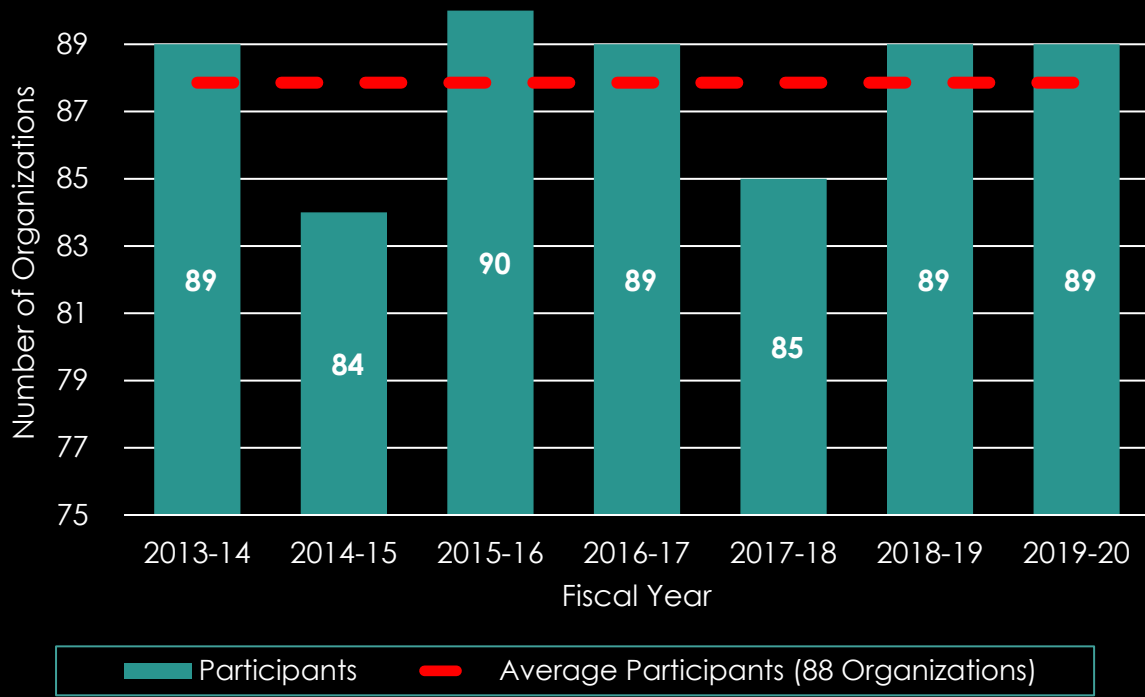



2019: No Current Data
(2018: Neutral)



GOAL: EDUCATE AND BUILD TRUST
BETWEEN PEOPLE AND
ORGANIZATIONS.

COLLABORATION FOR MORE EFFECTIVE OUTCOMES INDICATOR

2019: Positive
(2018: Positive)

QUESTIONS AND DISCUSSION



Ian Achimore
Senior Watershed Manager
Santa Ana Watershed Project Authority
iachimore@sawpa.org, (951) 354-4233

And special thanks to the Sustainability Assessment contributors:

- California Department of Water Resources
- Elizabeth Andrews (Environmental Science Associates)
- Peter Vorster (The Bay Institute)
- Eastern Municipal Water District
- Inland Empire Utilities Agency
- Orange County Water District
- San Bernardino Valley Municipal Water District
- Western Municipal Water District