

Sonoma Creek Enhancement Project

Improving Ecological Conditions in a Centennial Marsh



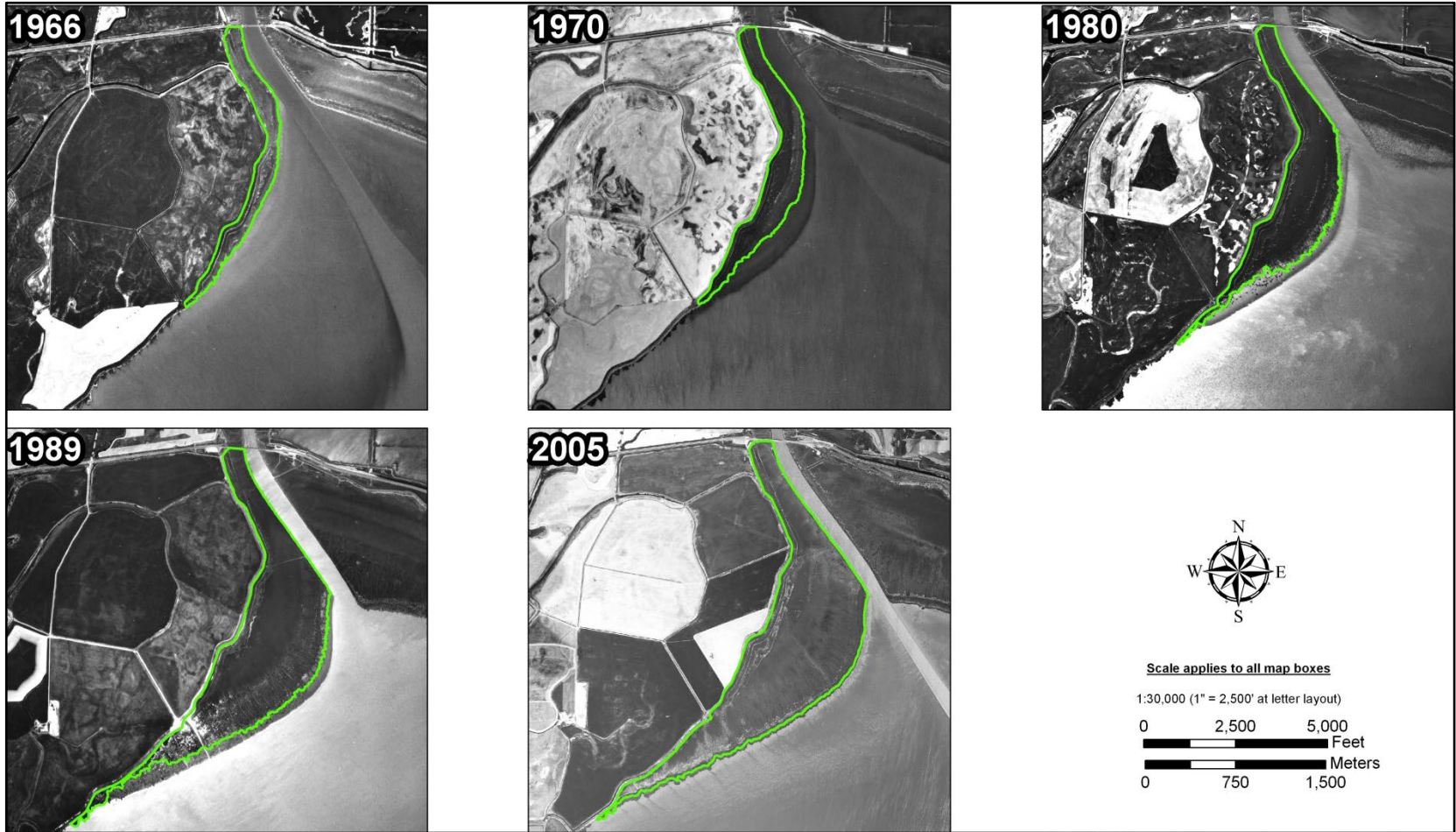
Audubon CALIFORNIA



Project Site Location: San Pablo Bay National Wildlife Refuge



Development of the Sonoma Creek Centennial Marsh




Scale applies to all map boxes

1:30,000 (1" = 2,500' at letter layout)

0 2,500 5,000 Feet

0 750 1,500 Meters

Data sources: HJW (photos: 1966 - 1989); NAIP (photo: 2005);
 WWR (data: 2007)
 Produced by WWR, March 2007
 GIS/cartography by Dan Gillenwater
 Map file: Marsh-development_1123_2007-0307do.mxd

 Boundary of marsh vegetation



MARSH DEVELOPMENT: 1966 - 2005

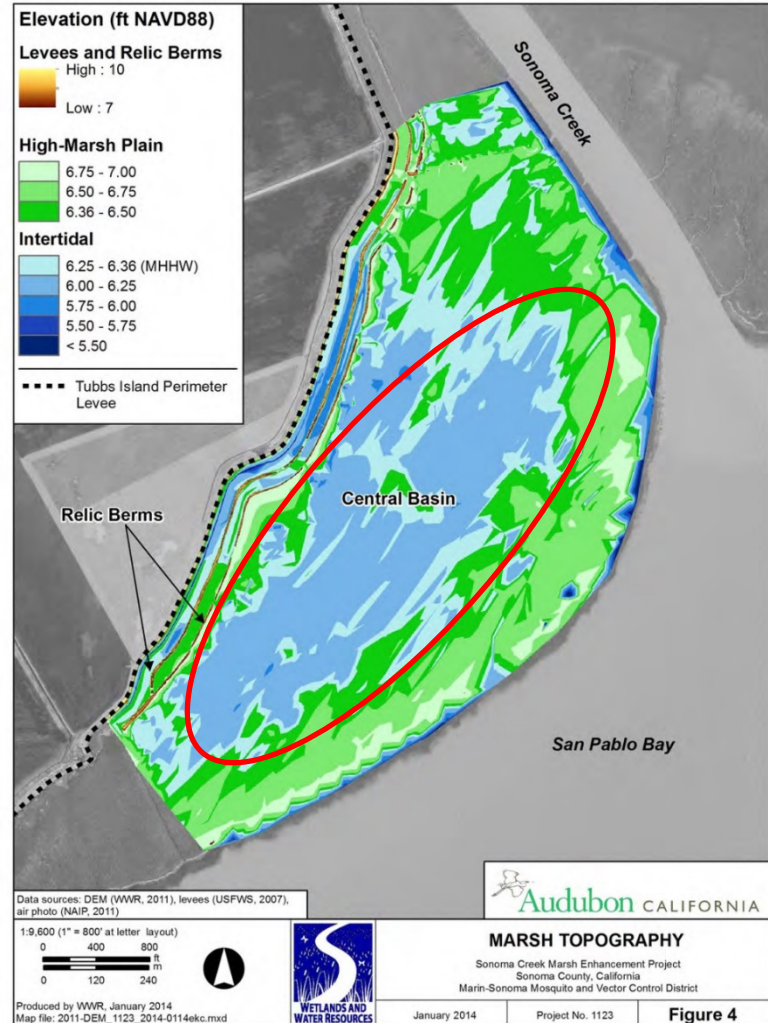
USFWS San Pablo Bay NWR
 Sonoma County, California

March 2007

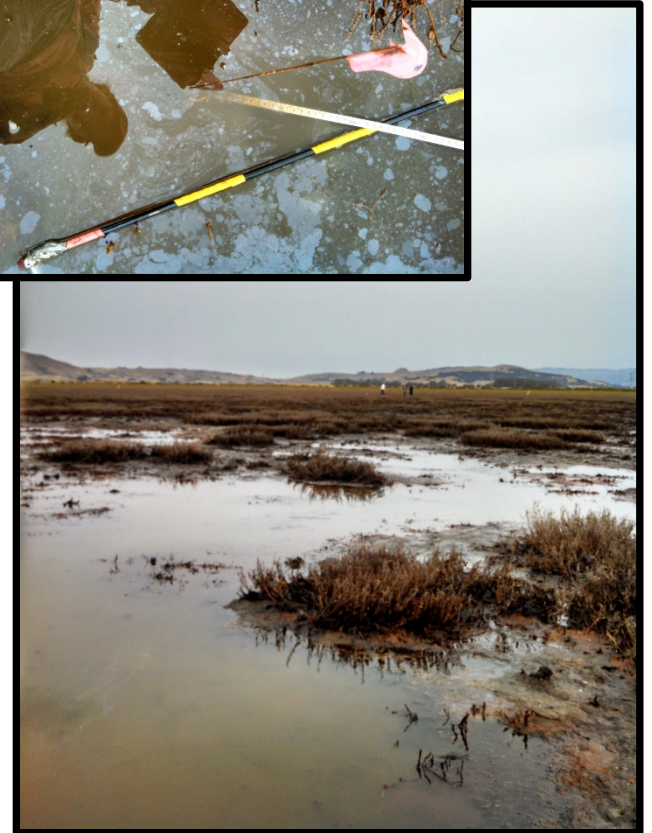
Project No. 1123



Central Basin



Central Basin Conditions



Relict Berm Area Conditions



Sonoma Creek Enhancement Project – Channel Design



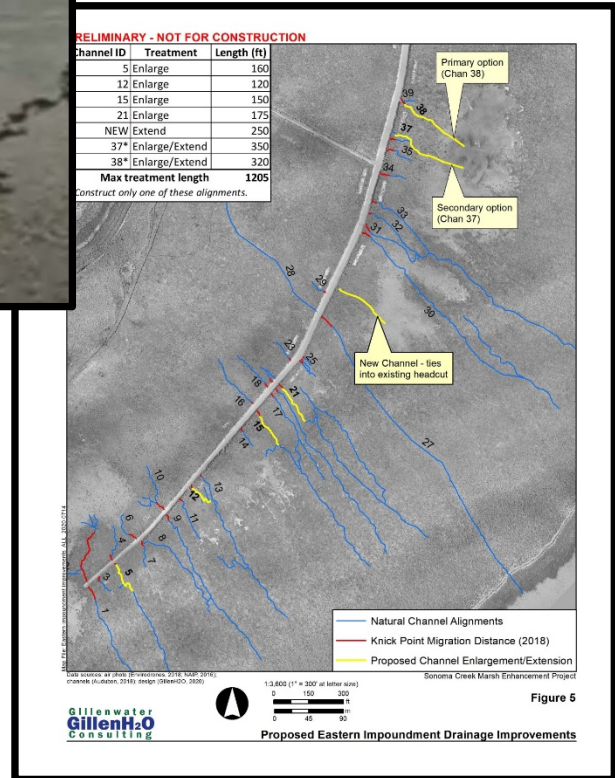
Phase 1: Channels & Immediate Results



Phase 1: Adaptive Management – Hand Ditching



Phase 2: Adaptive Management - Excavation



Phase 2: Adaptive Management Rotary Ditching and Blocking

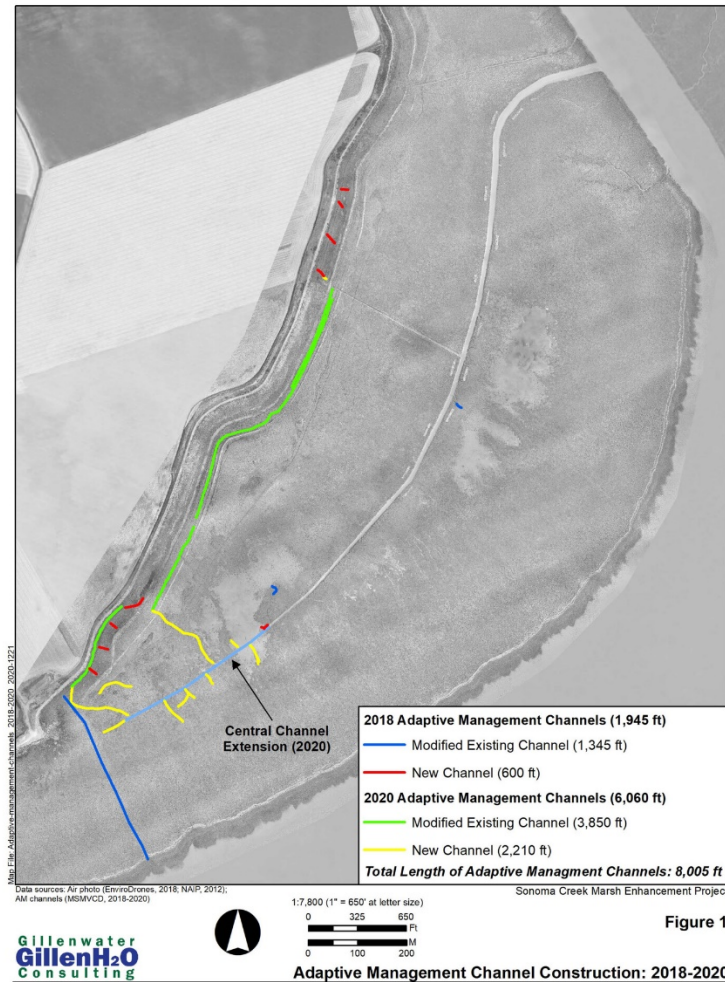


Figure 1

Adaptive Management Channel Construction: 2018-2020



Thank you!



Audubon CALIFORNIA



Gillenwater
GillenH₂O
Consulting

