



Sears Point Restoration Project: Adaptively Managing Shoreline Erosion with a Nature-Based Solution

Julian Meisler, Sonoma Land Trust



Sears Point Restoration Project



Diked agricultural bayland



Breach



Return of the tides

Sears Point Restoration Project

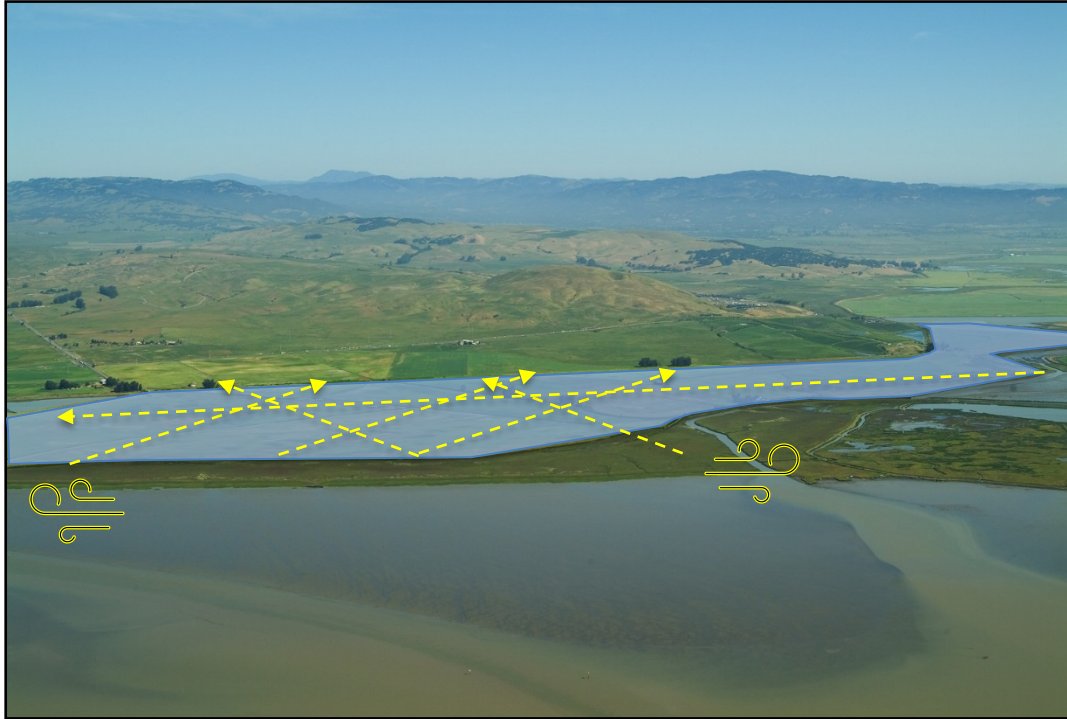
Biological monitoring



Physical monitoring



Sears Point Restoration Project



Delta Science Program: 2nd biennial Adaptive Management Forum

Sears Point Restoration Project

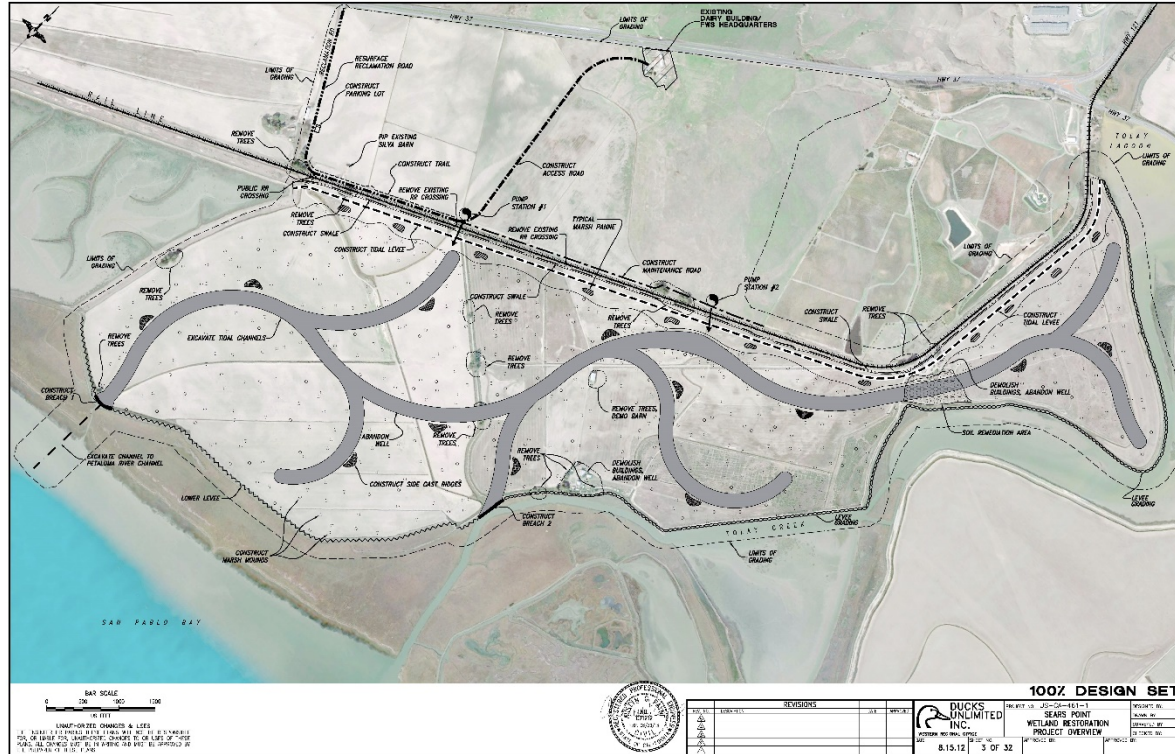
Marsh mounds



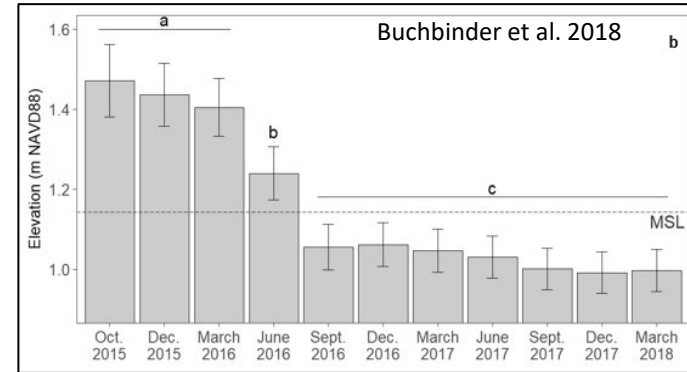
Sears Point Restoration Project



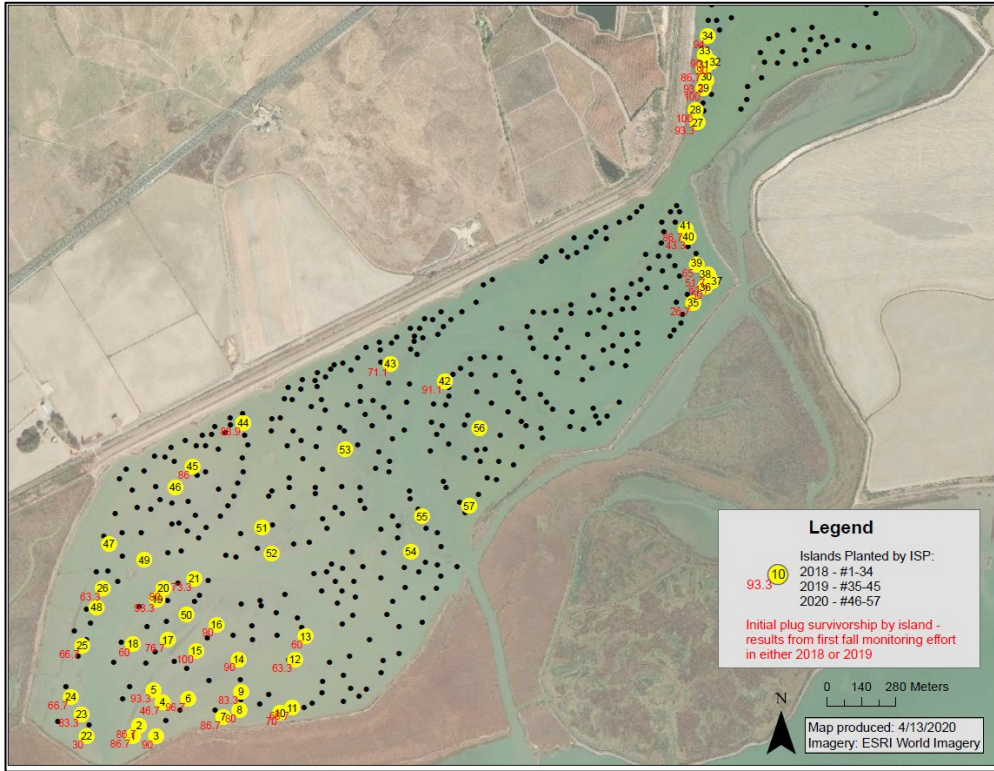
Sears Point Restoration Project



Sears Point Restoration Project



Sears Point Restoration Project



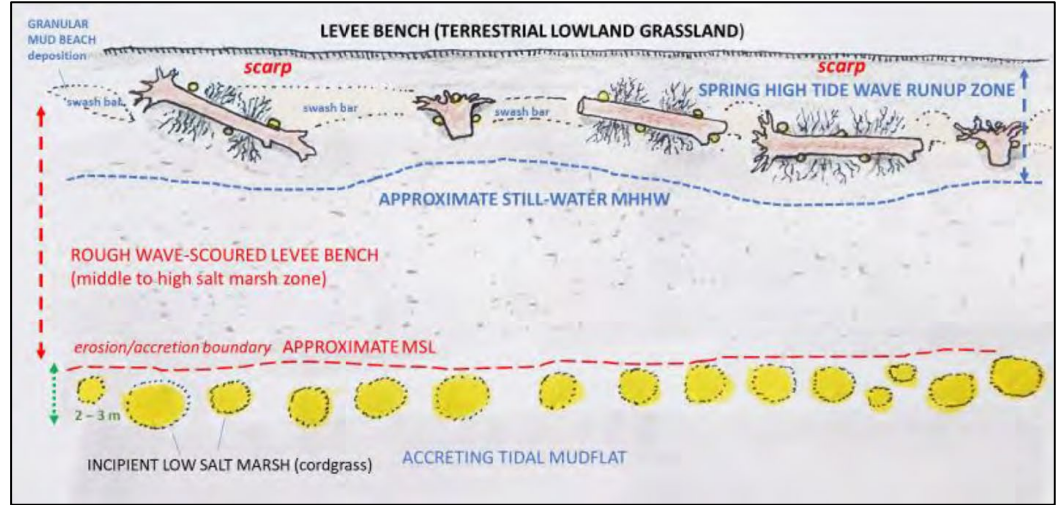
Sears Point Restoration Project



Sears Point Restoration Project

A “Living Shoreline” Approach to Adaptive Management

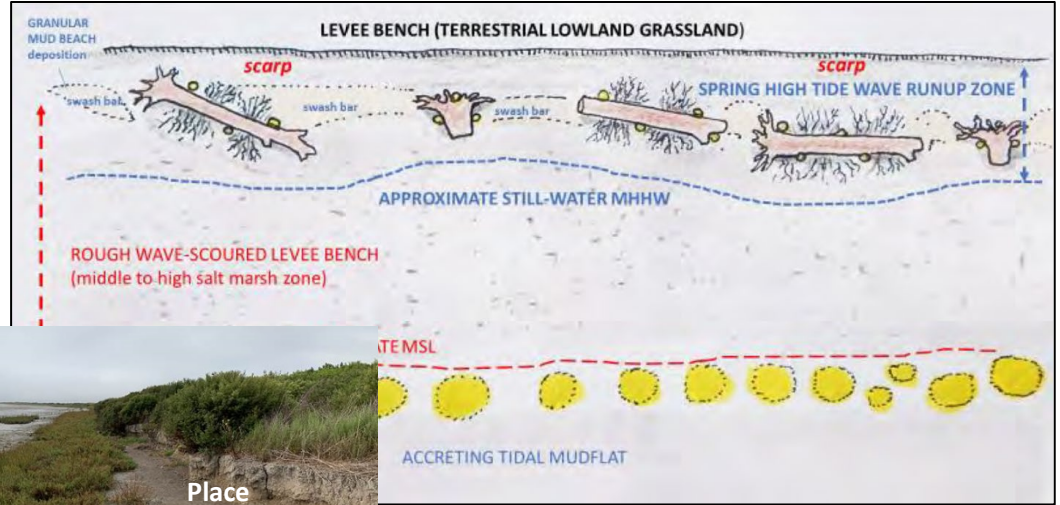
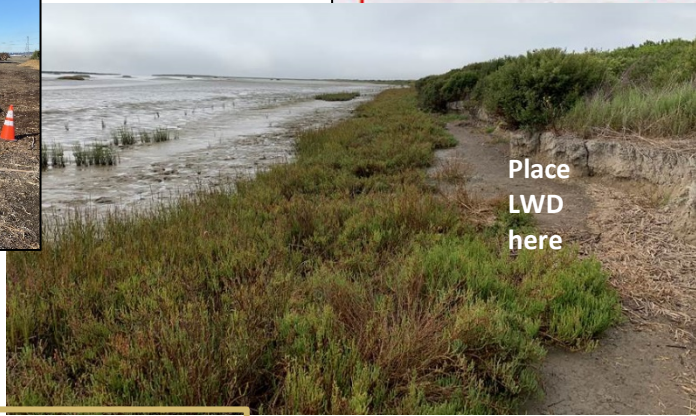
Cordgrass transplants



Sears Point Restoration Project

A “Living Shoreline” Approach to Adaptive Management

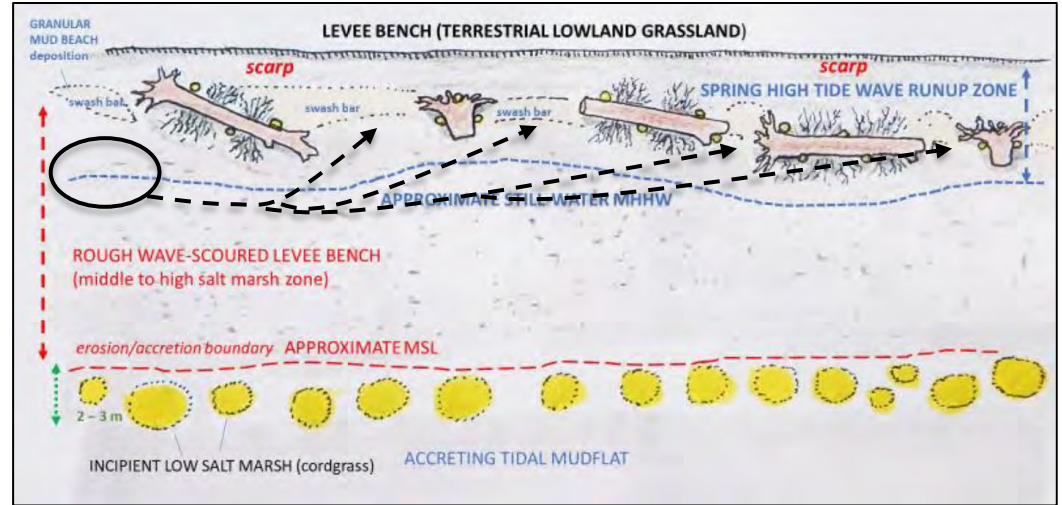
- Anchored logs



Sears Point Restoration Project

A “Living Shoreline” Approach to Adaptive Management

- Dried Bay mud



Sears Point Restoration Project



Delta Science Program: 2nd biennial Adaptive Management Forum



Peter R. Baye, Ph.D.
Botanist, Coastal Ecologist

FarWest
RESTORATION
ENGINEERING

