

Black Rails at Lindsey Slough: Lessons Learned for Tidal Marsh Restoration

February 4, 2021

Adaptive Management Forum
Sarah Estrella, Dept. of Fish & Wildlife



Lindsey Slough Tidal Restoration

Calhoun Cut ER



Calhoun Cut History

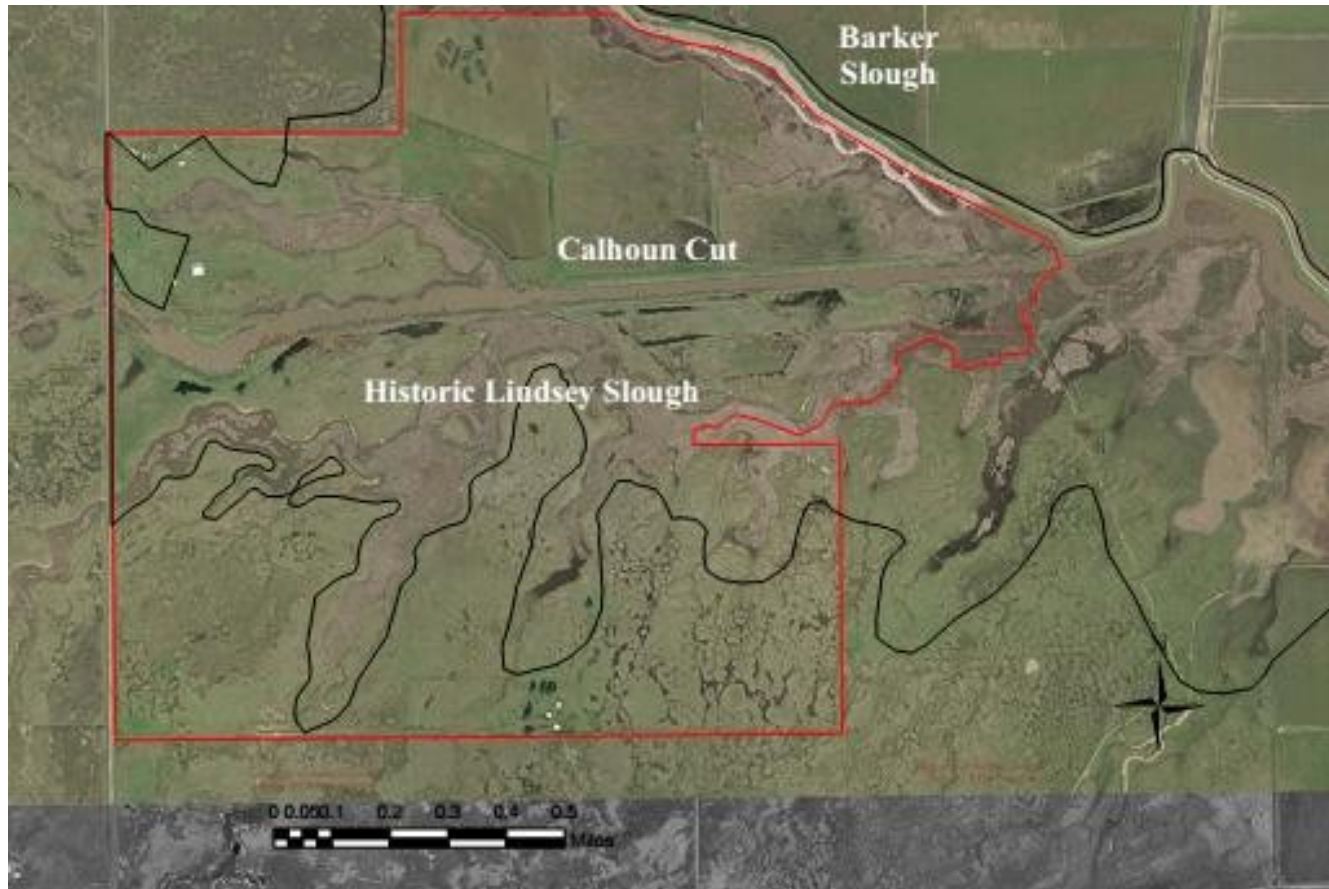
April, 1913: Calhoun dredged a canal from the Sacramento River to
“Solano City”

Length: 9 miles

Width: 75 feet

Depth: 17 feet

Isolated 87 acres of tidal wetlands



Tidal Restoration

December, 2006

CBDA: ERP-02D-P54 / PWA: 1748

An Evaluation of the Feasibility of Restoring Freshwater Tidal Wetlands at Calhoun Cut Ecological Reserve

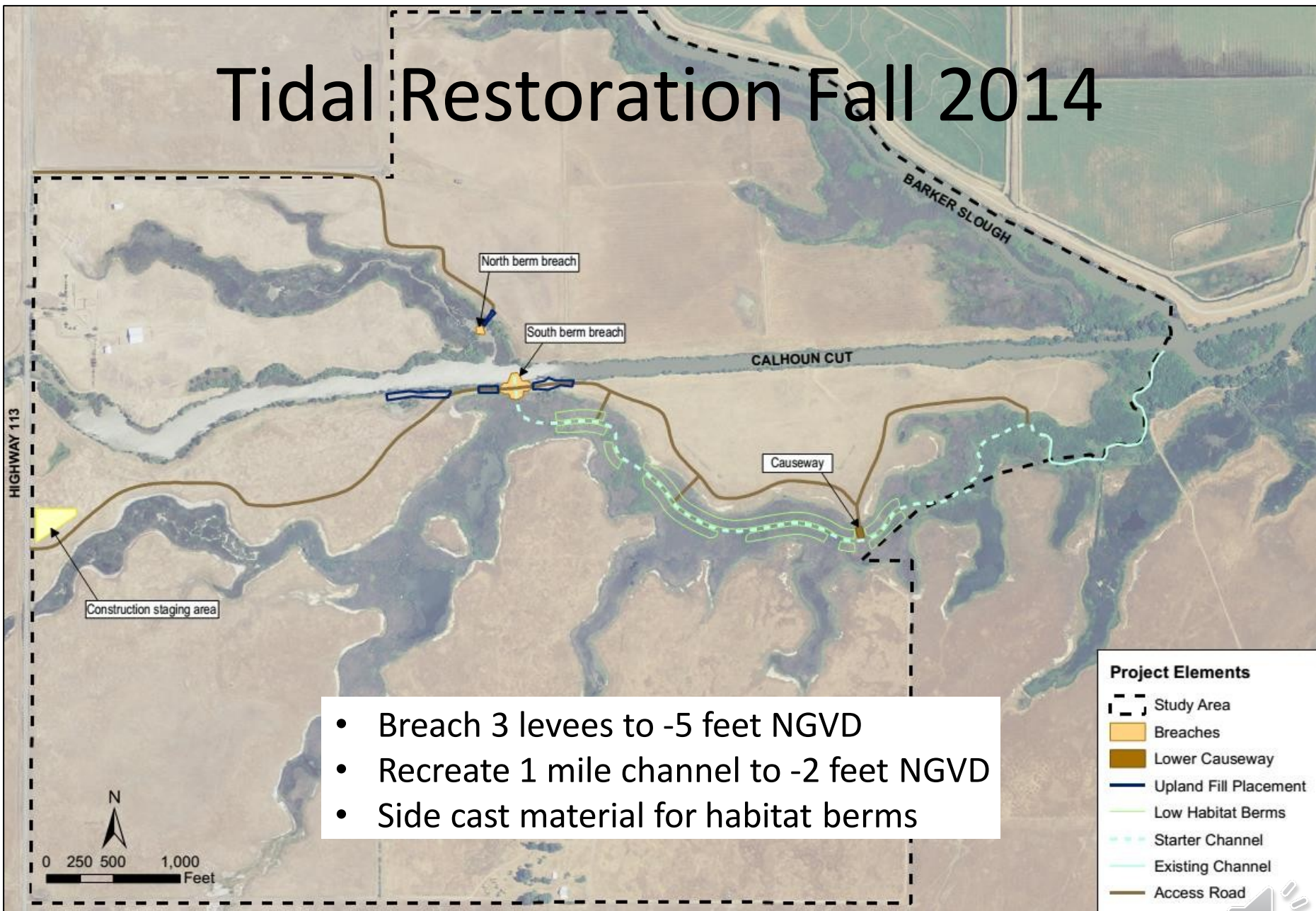
Prepared for

Solano Land Trust
California Department of Fish & Game
California Bay Delta Authority

Greater Jepson Prairie Ecosystem
Regional Management Plan



Tidal Restoration Fall 2014



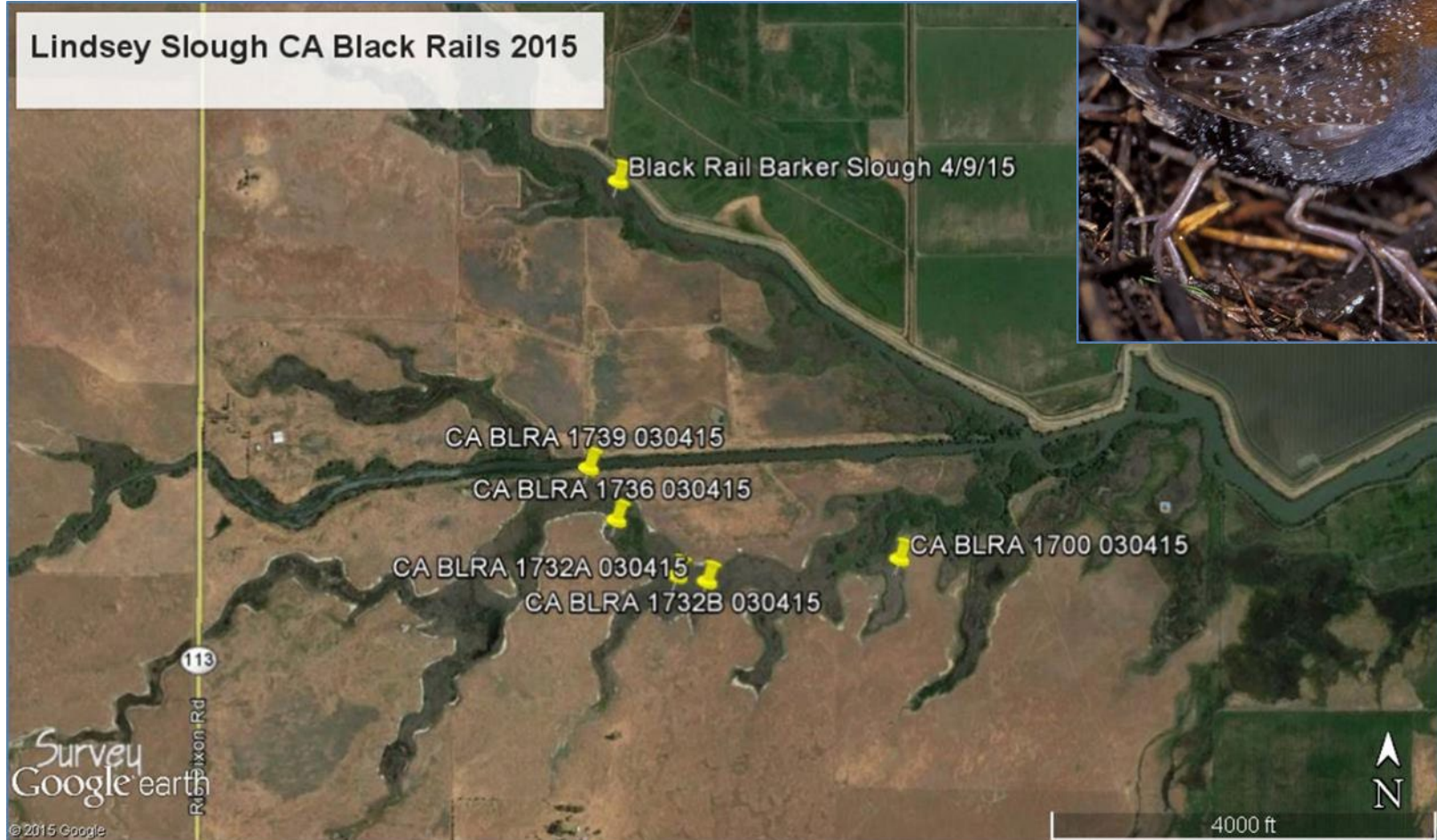


Breaches





2015: One year following restoration



2015: One year following restoration



Sacramento pikeminnow



Mason's Lilaeopsis



Suisun Aster, Delta Tule Pea



2020: 6 years following restoration

FAV and SAV impact flow



2020: 6 years following restoration

No turtle habitat



2020: 6 years following restoration

Happy beavers



Sora



Future?

Reconsider other project alternatives?

Dredge periodically?

Control or remove aquatic weeds?

No action?

