

ADAPTING TO ADAPTATIVE MANAGEMENT

SAN FRANCISCO BAY CONSERVATION AND DEVELOPMENT COMMISSION

BRENDA GOEDEN, SEDIMENT PROGRAM MANAGER

Permitting for Adaptive Management Success Workshop
February 4, 2021



SAN FRANCISCO BAY CONSERVATION AND DEVELOPMENT COMMISSION

Jurisdiction, Authority, & Policies

McAteer-Petris Act

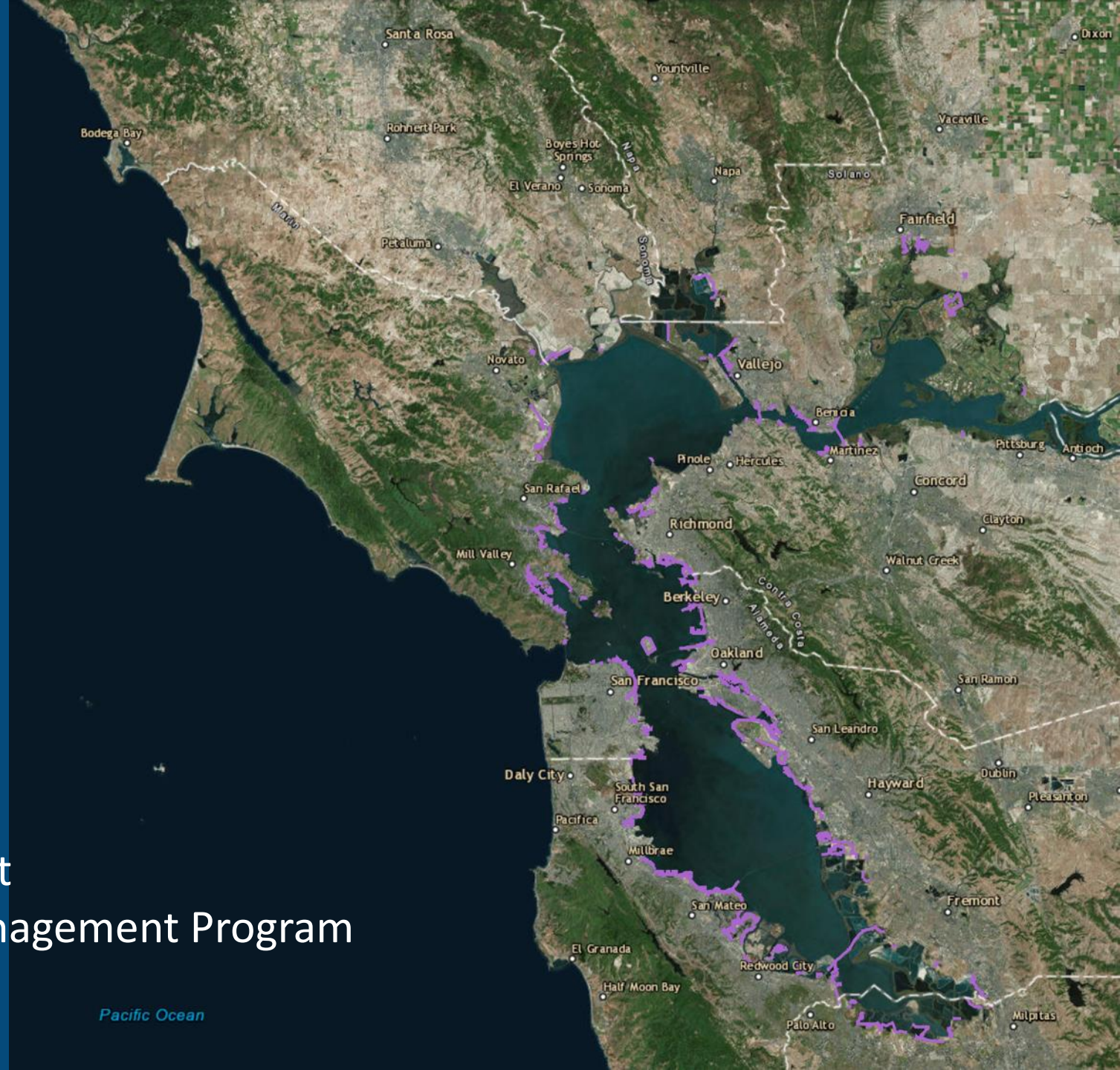
- San Francisco Bay Plan

Suisun Marsh Preservation Act

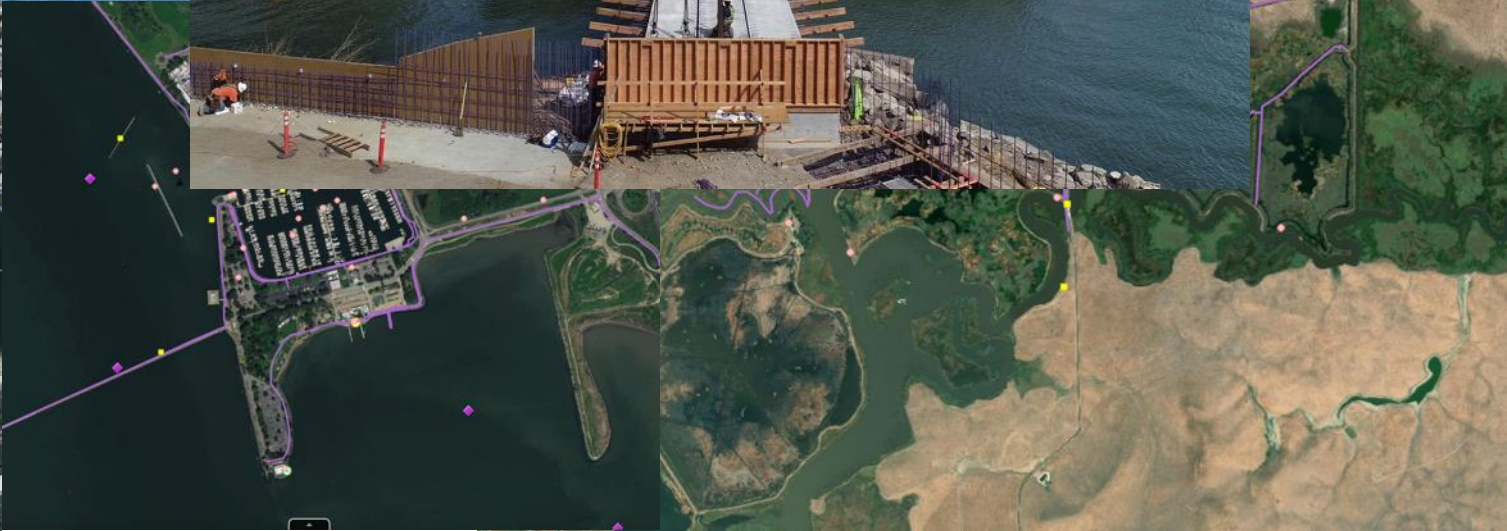
- Suisun Marsh Protection Plan

Federal Coastal Zone Management Act

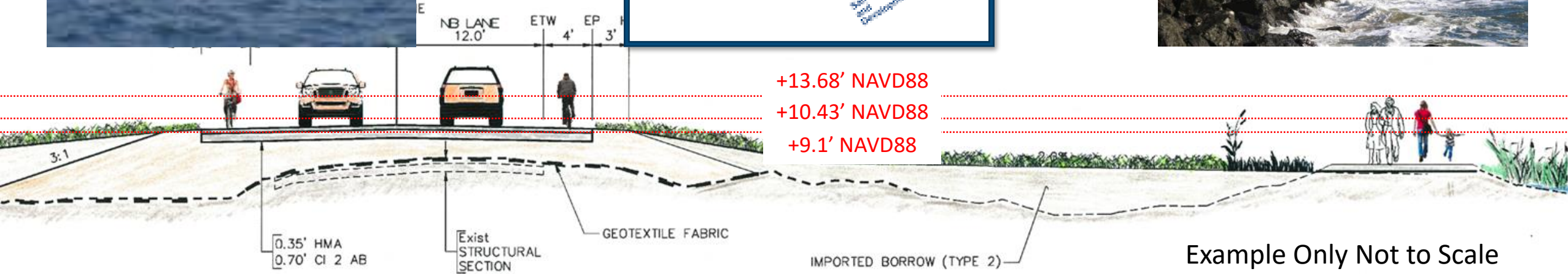
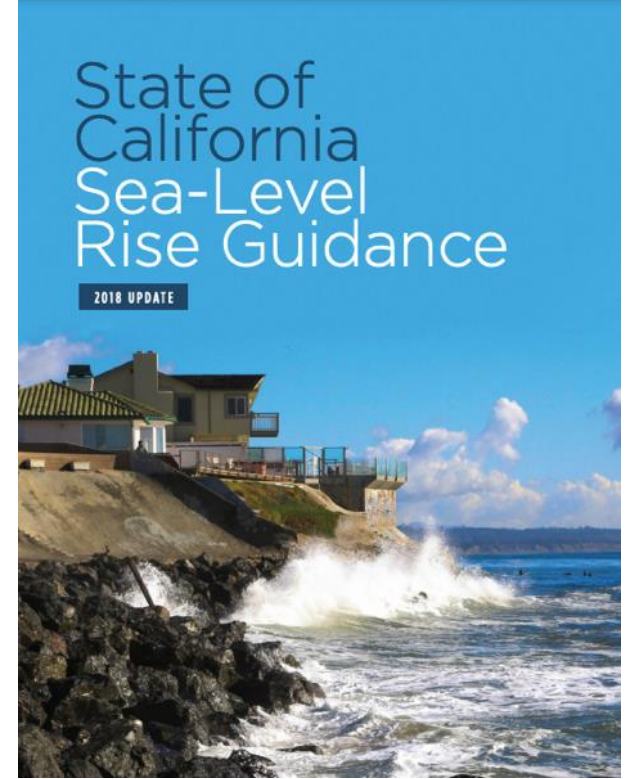
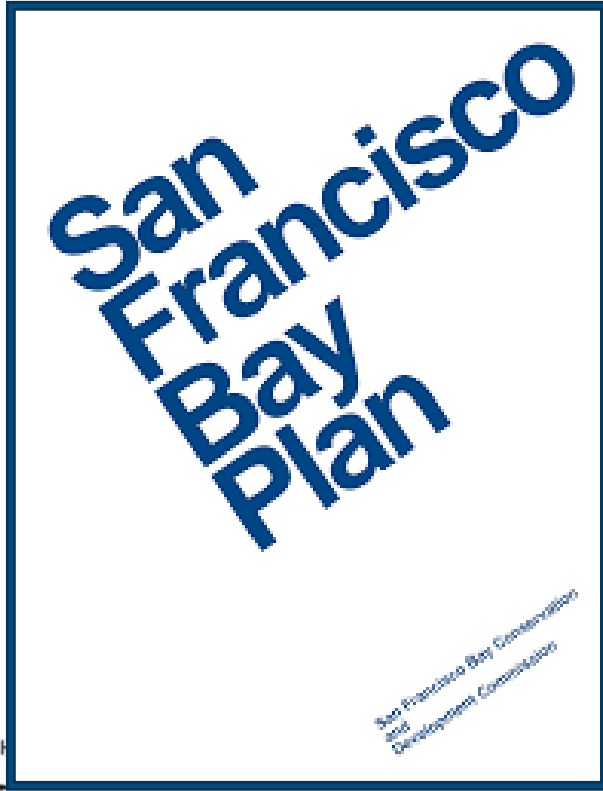
- San Francisco Bay Coastal Zone Management Program



BDCD REGULATORY REVIEW: PROJECTS



SAN FRANCISCO BAY PLAN AND ADAPTIVE MANAGEMENT



Example Only Not to Scale

SAN FRANCISCO BAY AND ADAPTIVE MANAGEMENT

Climate Change Amendment (2011)

Policy 2: Large shoreline projects require a risk assessment

Policy 3: Mid-century resilience, end-century adaptation

Policy 4: Enhance habitats vulnerable to flooding

Policy 5: Innovative SLR adaptation approaches

Policy 6: Regional SLR adaptation strategy

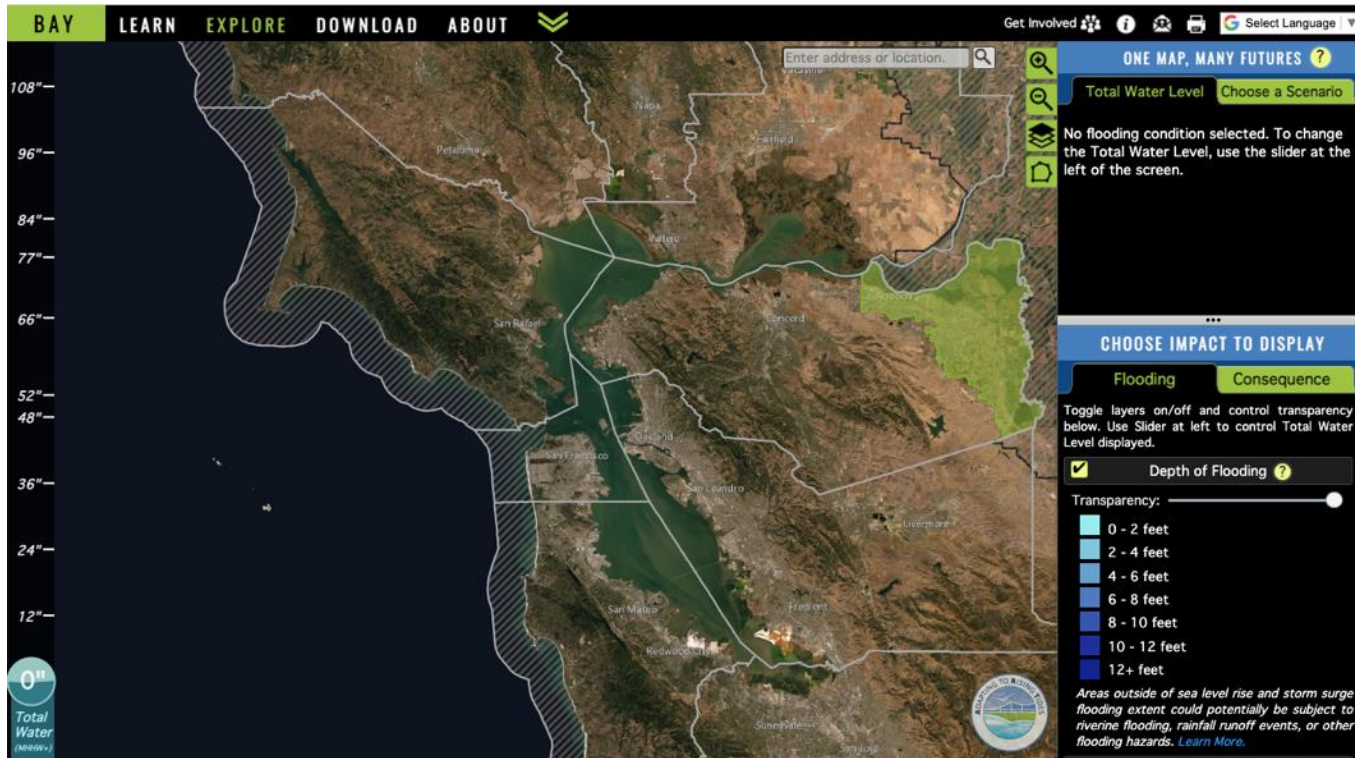
Policy 7: Project exemptions

Other policies adjusted throughout SF Bay Plan

Fill for Habitat Amendment (2019)

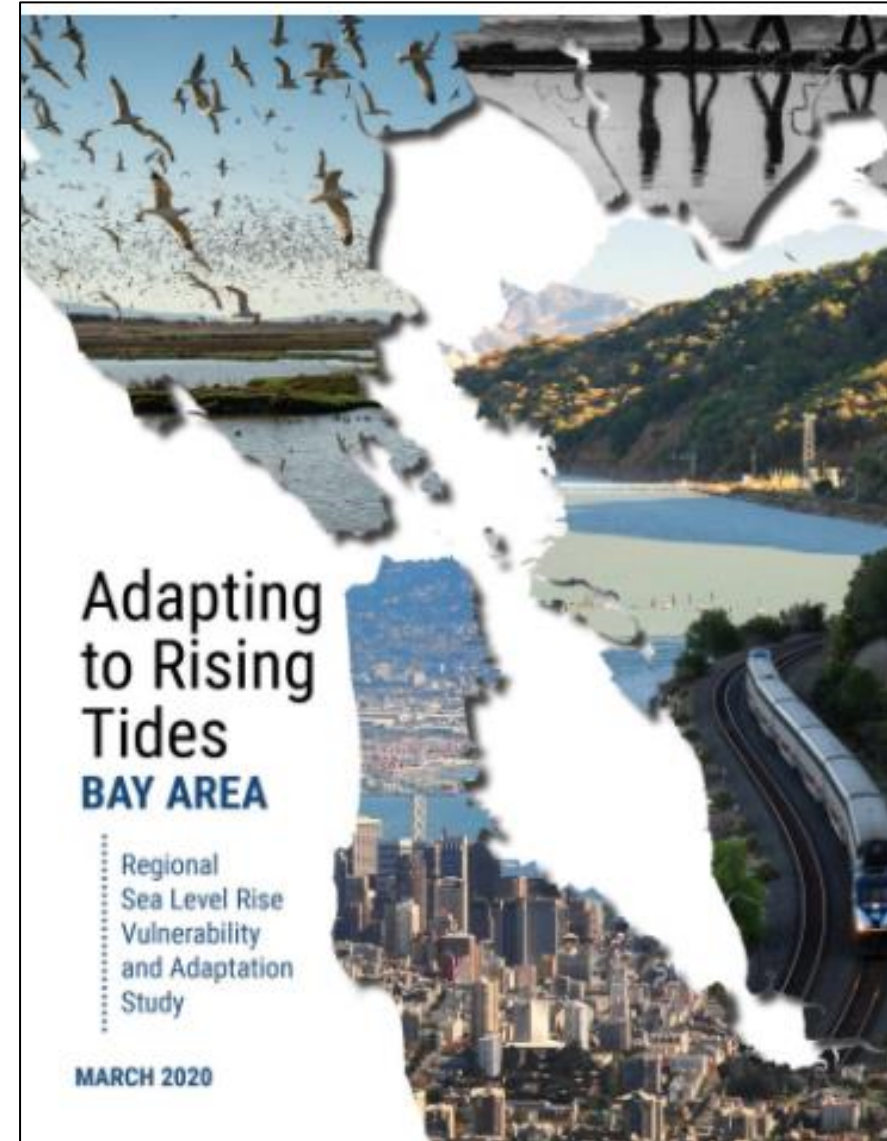
- Adjusted policies throughout the Bay Plan for habitat projects
- Allows fill in tidal water for adaptation to rising seas
- Requires use of best available science
- Further supports green infrastructure
- Increases reliance on adaptive management
- Requires an adaptive management funding strategy
- Supports well considered pilot projects

CONTINUED PLANNING FOR ADAPTATION



<https://explorer.adaptingtorisingtides.org/explorer>

www.bcdc.ca.gov



THANK YOU



brenda.goeden@bccdc.ca.gov

www.bccdc.ca.gov