

# Points of Contact



<http://www.water.ca.gov/groundwater/sgm/outreach.cfm>

The POC is the primary contact person for the high and medium priority basins for SGMA technical support.

A screenshot of the California Department of Water Resources website. The page title is "SGM Sustainable Groundwater Management" and the sub-header is "Communication and Outreach". The page content includes a paragraph about Governor Brown's signing of the Sustainable Groundwater Management Act (SGMA), a list of key audiences for outreach, and a section for "Advisory Groups". A red box highlights the "Region Office Contacts" section, which lists regional coordinators for Northern, North Central, South Central, and Southern California. A right-hand sidebar contains a "GROUNDWATER HOME" section with various links like "Sustainable Groundwater Management", "Advisory Groups", and "Resources".

**CA.GOV** CALIFORNIA DEPARTMENT OF WATER RESOURCES

HOME NEWSROOM & EVENTS ISSUES ABOUT US

SGM Sustainable Groundwater Management

## Communication and Outreach

Governor Brown noted upon signing the Sustainable Groundwater Management Act (SGMA) that groundwater is best managed at the local level, and that the State's primary role is to provide guidance and support. The California Water Action Plan, SGMA, and provisions of Proposition 1 (Water Bond) direct the State to provide assistance to local agencies. Successful implementation is directly tied to effective communication and outreach, in addition to coordination at all levels of government. The SGMA requires DWR to develop regulations and tools, provide data and information, and provide support to local and regional agencies as they take on central roles in managing their groundwater basins and advancing the California Water Action Plan. California water management needs are diverse and implementation of the SGMA necessitates timely, forthright, and consistent communication among all partners and stakeholders.

In addition to communication, proactive outreach to and engagement of partners and stakeholders is essential to achieving sustainable groundwater management at the local and regional level. Local and regional agencies in turn must reach out to keep local citizens, groundwater users, and stakeholders informed. Adaptive, practical, and two-way communication is essential to establishing and maintaining the partnerships needed. The Strategic Plan provides an overview of DWR's initial plan for communication, outreach, and coordination with partners. The key audiences for the outreach effort include:

- **State, Federal and Tribal Governments:** Governor's Administration, Legislature and key State and Federal agencies, tribes
- **Regional and local governments and agencies:** Water and groundwater management agencies and districts; land use entities such as counties and cities
- **Other stakeholders:** Non-governmental organizations representing water, groundwater, environmental, environmental justice, and agriculture interests as well as universities
- **The public**

### Advisory Groups

The advisory groups will help DWR come to a common understanding of the various issues as DWR develops the regulations and guidelines as part of the implementation. A list of the advisory groups and information about the advisory group meetings and communication efforts can be found on the [Advisory Group](#) page.

DWR will occasionally meet with water agency and county officials to ensure specific regional issues are discussed and well understood, and to ensure communication throughout the process.

### Region Office Contacts

DWR provides a variety of Integrated Regional Water Management (IRWM) related resources to assist water management groups and the public. Sustainable Groundwater Management Program will continue utilizing the established regional resources for communication and outreach within your region. Regional Coordinators serve as primary points of contact for communication and outreach with local stakeholders.

All high and medium priority basins are assigned a Point of Contact from DWR Region Offices. These POCs are to assist GSAs and stakeholders in the basin to connect with the Sustainable Groundwater Management Program and locate resources for assistance.

Find POCs for groundwater basins in:

- Northern Region
- North Central Region
- South Central Region
- Southern Region

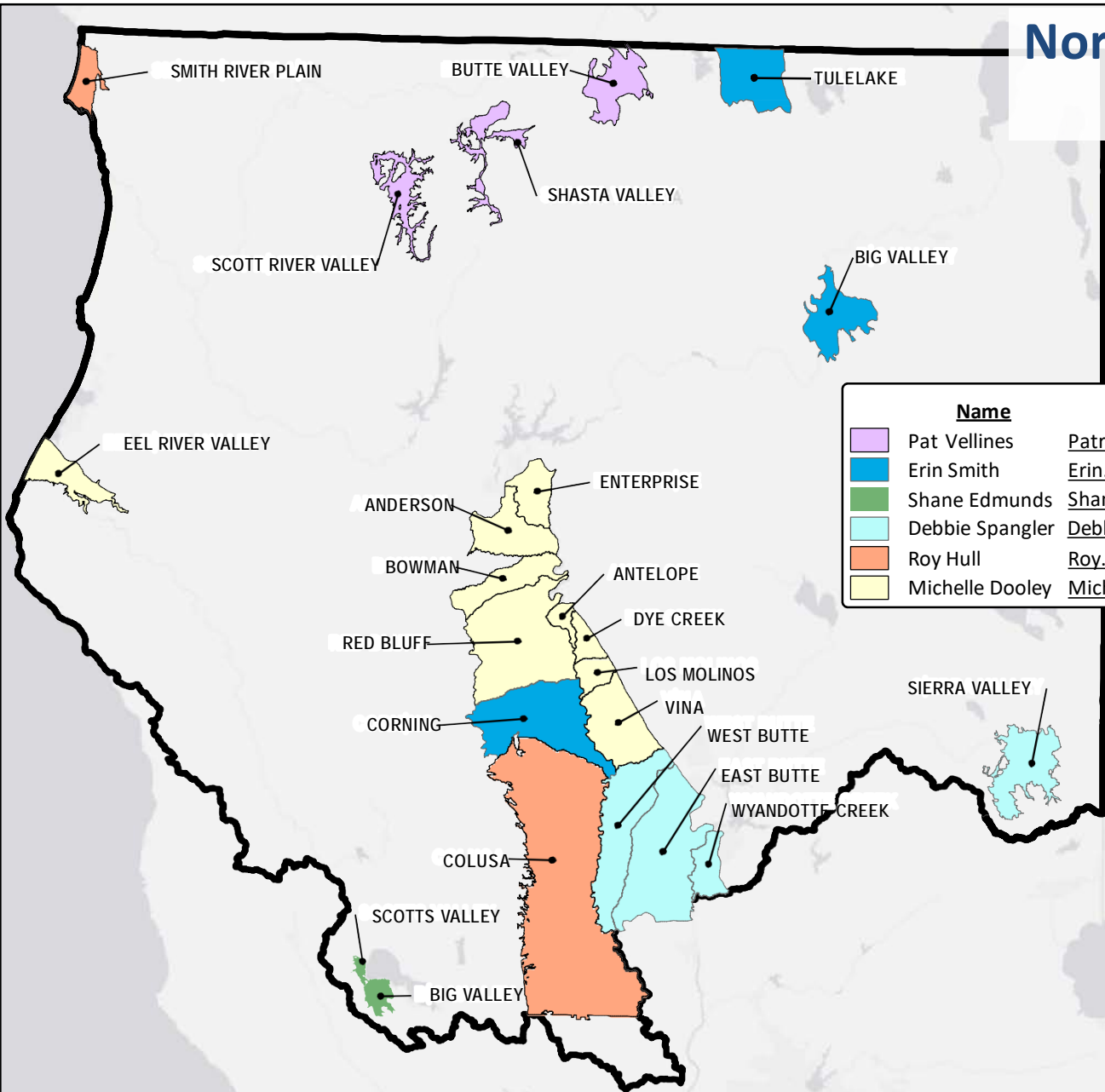
### GROUNDWATER HOME

#### SUSTAINABLE GROUNDWATER MANAGEMENT

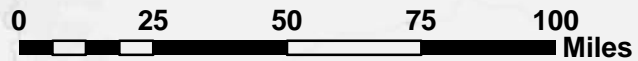
- ▶ Adjudicated Basin Reporting
- ▶ Alternative Submittals
- ▶ Basin Boundary Modifications
  - ▶ BBAT - Basin Boundary Assessment Tool
  - ▶ BBMS - Basin Boundary Modification Request System
- ▶ Best Management Practices
  - ▶ Public Comments
- ▶ Critically Overdrafted Basins
- ▶ Communication and Outreach
  - ▶ Advisory Groups
  - ▶ Calendar
  - ▶ Subscribe for Email Updates
- ▶ Groundwater Sustainability Agencies
  - ▶ GSA Notices and Map
  - ▶ Withdrawals and Out-Of-Notices
- ▶ Groundwater Sustainability Plan Requirements
  - ▶ Initial Notifications
- ▶ Initial Basin Prioritization
- ▶ Water Available For Replenishment
  - ▶ WAFR Public Comments
- ▶ Resources
  - ▶ Data, Tools, & Reports
  - ▶ SGWP Grant Program
  - ▶ Facilitation Support Services
  - ▶ SGMA Definitions
  - ▶ SGM Archive
- ▶ GROUNDWATER INFORMATION CENTER
- ▶ CASGEM
- ▶ BULLETIN 116

# Northern Region Office

## Points of Contact \*



Name	Email	Phone
Pat Vellines	<a href="mailto:Patricia.Vellines@water.ca.gov">Patricia.Vellines@water.ca.gov</a>	(530) 529-7344
Erin Smith	<a href="mailto:Erin.Smith@water.ca.gov">Erin.Smith@water.ca.gov</a>	(530) 529-7314
Shane Edmunds	<a href="mailto:Shane.Edmunds@water.ca.gov">Shane.Edmunds@water.ca.gov</a>	(530) 528-7423
Debbie Spangler	<a href="mailto:Debbie.Spangler@water.ca.gov">Debbie.Spangler@water.ca.gov</a>	(530) 528-7404
Roy Hull	<a href="mailto:Roy.Hull@water.ca.gov">Roy.Hull@water.ca.gov</a>	(530) 529-7337
Michelle Dooley	<a href="mailto:Michelle.Dooley@water.ca.gov">Michelle.Dooley@water.ca.gov</a>	(530) 529-7380

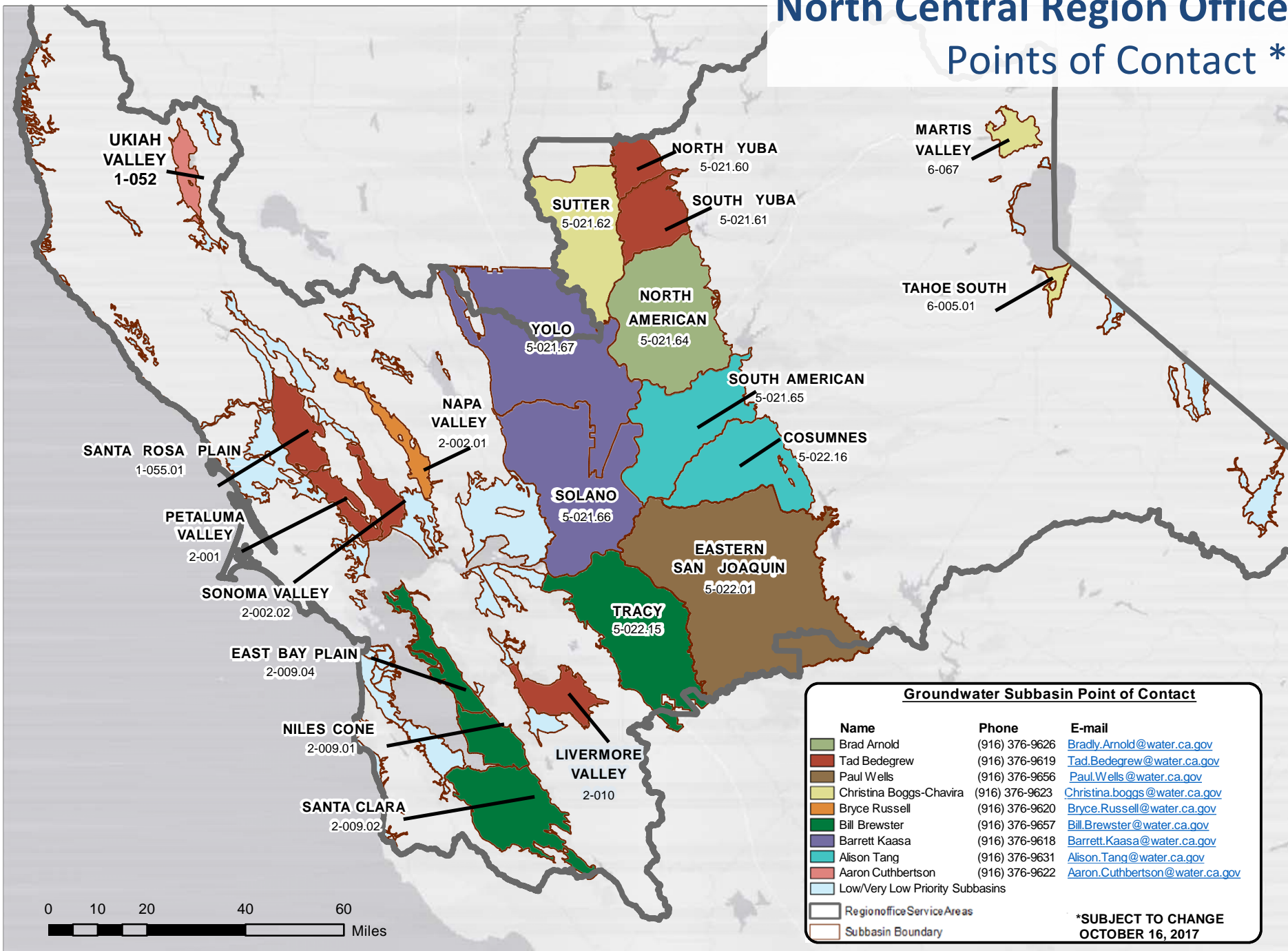


\* Subject to Change

September 2017

# North Central Region Office

## Points of Contact \*



### Groundwater Subbasin Point of Contact

Name	Phone	E-mail
Brad Arnold	(916) 376-9626	<a href="mailto:Brady.Arnold@water.ca.gov">Brady.Arnold@water.ca.gov</a>
Tad Bedegrew	(916) 376-9619	<a href="mailto:Tad.Bedegrew@water.ca.gov">Tad.Bedegrew@water.ca.gov</a>
Paul Wells	(916) 376-9656	<a href="mailto:Paul.Wells@water.ca.gov">Paul.Wells@water.ca.gov</a>
Christina Boggs-Chavira	(916) 376-9623	<a href="mailto:Christina.boggs@water.ca.gov">Christina.boggs@water.ca.gov</a>
Bryce Russell	(916) 376-9620	<a href="mailto:Bryce.Russell@water.ca.gov">Bryce.Russell@water.ca.gov</a>
Bill Brewster	(916) 376-9657	<a href="mailto:Bill.Brewster@water.ca.gov">Bill.Brewster@water.ca.gov</a>
Barrett Kaasa	(916) 376-9618	<a href="mailto:Barrett.Kaasa@water.ca.gov">Barrett.Kaasa@water.ca.gov</a>
Alison Tang	(916) 376-9631	<a href="mailto:Alison.Tang@water.ca.gov">Alison.Tang@water.ca.gov</a>
Aaron Cuthbertson	(916) 376-9622	<a href="mailto:Aaron.Cuthbertson@water.ca.gov">Aaron.Cuthbertson@water.ca.gov</a>
Low/Very Low Priority Subbasins		
Region office Service Areas		
Subbasin Boundary		

\*SUBJECT TO CHANGE  
OCTOBER 16, 2017

# South Central Region Office




## Points of Contact \*

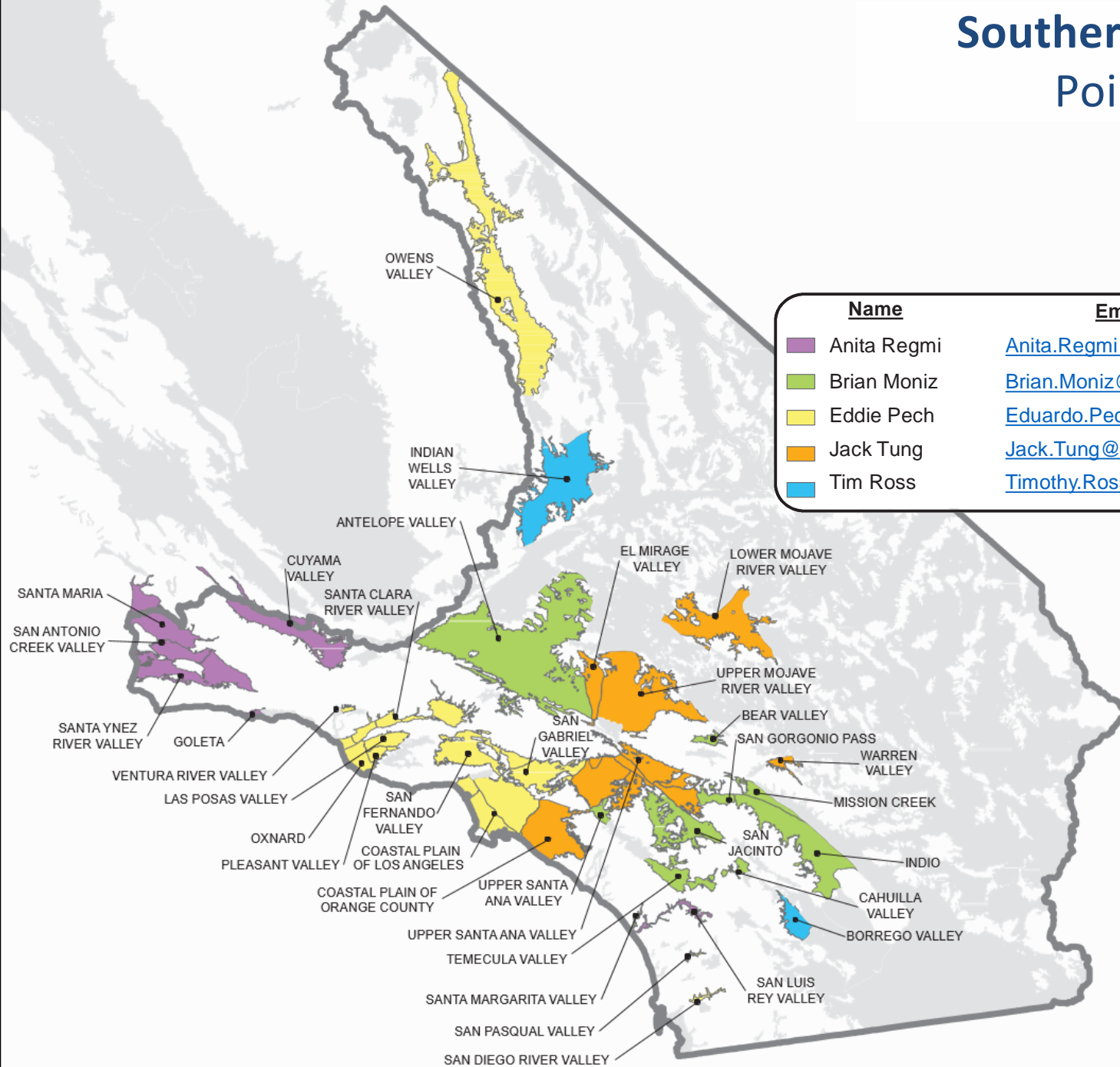




# Southern Region Office

## Points of Contact \*

Name	Email	Phone
 Anita Regmi	<a href="mailto:Anita.Regmi@water.ca.gov">Anita.Regmi@water.ca.gov</a>	(818) 549-2340
 Brian Moniz	<a href="mailto:Brian.Moniz@water.ca.gov">Brian.Moniz@water.ca.gov</a>	(818) 549-2325
 Eddie Pech	<a href="mailto:Eduardo.Pech@water.ca.gov">Eduardo.Pech@water.ca.gov</a>	(818) 549-2324
 Jack Tung	<a href="mailto:Jack.Tung@water.ca.gov">Jack.Tung@water.ca.gov</a>	(818) 549-2341
 Tim Ross	<a href="mailto:Timothy.Ross@water.ca.gov">Timothy.Ross@water.ca.gov</a>	(818) 549-2345



\*Subject to change

October 2017